

Auction  
222.1









# The Matsuki Collection

## Japanese Fine Arts



Davis & Harvey's Art Galleries,  
Philadelphia.

PRICE, 25 CENTS.



SMITHSONIAN  
INSTITUTION

3087.



BUNKIO MATSUKI (THE COLLECTOR), IN JAPAN.



# DESCRIPTIVE CATALOGUE

OF AN

IMPORTANT KERAMIC COLLECTION

OF

# JAPANESE AND CHINESE

POTTERY, PORCELAIN, BRONZES, LACQUERS,  
BROCADE, PRINTS, EMBROIDERIES, KAKEMONO,  
SCREENS, ETHNOLOGICAL AND

BUDDHIST OBJECTS

---

SELECTED BY

MR. BUNKIO MATSUKI

OF

KOBE, JAPAN, AND BOSTON.

---

TO BE SOLD AT AUCTION WITHOUT RESERVE

ON

SATURDAY, JANUARY 22, AND  
EACH FOLLOWING DAY, AT 2.30 O'CLOCK P. M.

AT

DAVIS AND HARVEY'S GALLERIES,

1212 CHESTNUT STREET,

WHERE THE COLLECTION IS NOW ON EXHIBITION.

---

MESSRS. DAVIS & HARVEY, AUCTIONEERS

PHILADELPHIA

1898

---

COPYRIGHT, 1898, BY BUNKIO MATSUKI.

---

01737  
M 42 ✓  
1898

## PREFATORY NOTE.

---

Since the late Mr. Ninagawa Noritane made his famous collection of Ceramic Arts of Japan as illustrated in his Kwanko Dzusetsu, the interest of connoisseurs in this country and Europe having been awakened, these things were sought with such vigor that now old specimens are by no means easily obtained.

The collection here exhibited has been made by me personally and by special agents selected by me for the last ten years.

I am indebted to Professor Edward S. Morse for many suggestions and much advice in regard to the collection of old forms of pottery and objects of ethnological value and interest.

---

BUNKIO MATSUKI.

## Terms and Conditions of Sale.

---

Bills payable in CASH before delivery.

*Every* article embraced in the Catalogue will be sold to the highest bidder without limit.

If any disputes arise between two or more bidders, the lot so in dispute shall immediately be put up again and re-sold.

The sale of any article is not to be set aside on account of any inaccuracies of description in the Catalogue; all articles are exposed for public exhibition, and are sold just AS THEY ARE, without recourse.

To prevent errors in delivery, no lot can on any account be removed without presentation of the bill, and nothing will be delivered during the sale.

All bills must be paid, and purchases removed at the expense of the buyer, within twenty-four hours after the conclusion of the sale.

No article will be EXCHANGED or taken back under any circumstances whatever.

We will not be responsible for goods damaged in delivering.

Goods carefully packed and shipped.

Ladies and gentlemen unable to attend the sale can have their *orders for buying* executed by us without extra charge.

---

Davis & Harvey, Auctioneers.







NO. 5.

First Day's Sale Postponed to Saturday, Jan. 22.





## CATALOGUE.

---

First Day's Sale —Friday, Jan. 21, at 2.30 o'clock.

---

1. Relief Silk Embroidery, Old Temple Wall Hanging. Design, Sacred Dragon and tiger, with wild peony and clouds. The whole space of 8 1-2 x 6 1-4 feet is covered with needle work, bordered with old Donsu silk.
2. Old Kishu Vase. Marvellous specimen of Lord Kishu's garden ware. The vase itself is carved out, illustrating Nachi Mountain, including its famous waterfall. Glaze, rich purple and delicate blue. About 1810 A. D. Signed Ki Masakichi. Height, 25 inches.
3. Old Gold Lacquer Cabinet. Decorated with conventional chrysanthemum, solid silver handles. Originally used by Japanese Court Ladies in Kioto, 1820 A. D.
4. Shidoro Wine Bottle. Glaze, rich yellow and green. 1750 A. D. Height, 9 1-3 inches.

### NOTE.

Mitsuhiro Bronze. Mitsuhiro, the foremost living caster of Japanese bronze is about sixty-five years of age. His insignificant little dwelling is in Kanda, Tokio. He is peculiarly eccentric in his habits, sleeping always in his own workroom. But he is at once noble and original in his design and color, and ranks deservedly with old and great masters such as Seimin and Toun.

5. Mitsuhiro Green Bronze. Heron posing on one foot. This exquisite design was done by renowned painter Seitei. Positively the only specimen ever cast by Mitsuhiro. With teakwood stand. Height, 8 1-2 inches. (See illustration.)

6. Mitsuhiro Bronze Vase. Conventional dragon curling up in a way peculiarly characteristic of Mitsuhiro. Height, 11 inches.
7. Takatori Vase. Rich, mellow, yellow glaze over black ground. 1820 A. D. Height, 13 1-2 inches.
8. Iga Vase. Imogata shape. Old, and good specimen. 1840 A. D. Height, 10 1-2 inches.
9. Old Silk Gown. Navy blue, embroidered with gold Kiri design and lined with white Hoshio silk. 1790 A. D.
10. Mino Square Plaque. Earliest crackle of Mino, deeply glazed, with green and yellow design of Kiri and Howo. Signed Rikiu, Stamped Sai. 11 inches square.
11. Old Imari Dish. Nishikide-Brocade decoration in gosu blue and coral red. Diameter, 20 inches. 1850 A. D.
12. Japanese Palace Lamp. Black lacquer frame decorated with autumnal flowers. Height, 4 1-2 feet.
13. Old Oribe Dish. Oblong in shape with chrysanthemum design. 1800 A. D.
14. Kiyonaga Prints. Lady and attendants on the way to Cherry Festival. Rare and original early print. About 1783.
15. Folding Album of Kuniyoshi. A collection of the earliest works of Ichiusai Kuniyoshi, illustrating exploits of famous Japanese heroes. 102 pages. 1840 A. D.
16. Banko, square covered dish. Made by Banko Yusetsu about 1820. Design, green clouds and stork.
17. Kutani, round covered dish. Specimen of early kaga. Mass of Kanazawa green glaze.
18. Mitsuhiro Bronze Box. Mice on Osoneye Cake. Wonderful attitude of animal is characteristic of Mitsuhiro's art. Teakwood stand. Height, 8 inches.
19. Mitsuhiro Vase. Single flower vase of exquisite form. Teakwood stand. Height, 11 inches.





NO. 22.



20. Imperial Chinese Yellow Vase. Floral design in relief. Ching-lung period (1736-1795). Teakwood stand. Height, 14 inches.
21. Old Kiyomidzu bottle. Covered with old hard crackle, with crest of Lord Idzumi. 1780. Teakwood stand. Height, 10 inches.
22. Jade Vase. This noble specimen of white Jade was brought from Southern China by a Japanese Buddhist Priest, and was in the possession of Lord Date of Sendai. The Chinese landscape in gold lacquer work was designed by Kano Sanraku, a celebrated Court painter to the Mikado. Kwanyei period (1624-1643). How such lofty and dignified pictorial art could have been so faithfully worked into perfection is indeed a revelation. Diameter, 4 1-4 inches ; height, 9 1-2 inches. (See illustration.)
23. Bronze Torii, used in front of Shinto temple in private garden. Height, 14 inches.
24. Old Bronze Gong, with striker. Came from Buddhist temple. 120 years old. Diameter, 11 1-2 inches.
25. Old Bronze Jardiniere, beautifully hammered out in repoussé. 1820 A. D. Diameter, 16 inches.
26. Old Kaga Sake Bottle. Hexagonal, with coral red and gold landscape design. Teakwood stand. Height, 7 1-2 inches.
27. Raku Bowl. Work of eighth Raku, signed "Raku" in double ring. Diameter, 6 inches.
28. Awata Tea Bowl. Crackle of most delicate texture, quality soft and smooth as ivory, with crests of Tokugawa. Wonderful specimen of Awata ware. 1830 A. D. Teakwood stand.
29. Yatsushiro Tea Bowl. Design of peony in mist. Age, 1840 A. D.
30. Tsushima Tea Bowl. The island where this ware was made being very near Fusan, the ware has a great resemblance to Corean pottery, and is highly valued by the Japanese Tea Society. 1780 A. D.

31. Red Raku Bowl, made by Raku Kichizayemon, signed Raku. Age, 1840.
32. Blue Soma Tea Bowl. Very rare piece. Marvellous ruri blue glaze seldom treated with in Soma. Mark, Soma. 1750 A. D.
33. Iwakurazan Bowl. Pattern is conventional Chinese grass; early work of Giozan. Mark, Giozan; age, 1780.
34. Yekaratsu Jar. Decorated with Chinese landscape and probably done by Kano artist. Fine specimen, two hundred years old. Height, 10 inches.
35. Old wood garden lantern with iron chain, used in Tea Garden, Nagoya. Height, 15 inches.
36. Old Lacquer Box, decorated with New Year's flowers in gold. Used in Japan for boiled rice on guest table. 1810 A. D.
37. Old Bronze Kettle. Shape of cherry blossom in repoussé, made by Nagoshi, Kioto. 1820-1850.
38. Old Bronze Jardiniere in form of Lotus leaf, made in eighteenth century. Diameter, 14 inches.
39. Old Seto Jar. Rich dark brown; conventional design carved under the glaze. Beautiful form with teak-wood stand. 1720 A. D. Height, 7 inches.
40. Old Shigaraki Bottle, three streams of blue glaze running down. Unique specimen. 1720 A. D. Height, 12 inches.
41. Silk Embroidery. Design, Sacred Howo with Kiri flowers, bordered with Shichin brocade. Size, 5 x 4 1-2 feet.
42. Old blue and white Imari Dishes; six pieces, 1750 A. D. 8 1-2 inches.
43. Pottery dish, made at Nagoya, Owari, about fifty years ago. Mark, Hagiyaama.
44. Shigaraki Jar, made by Imai, Omi Province. Height, 2 1-2 feet.





NO. 50.

45. Yatsushiro Covered Box, octagonal shape. 1740 A. D.
46. Old Red Bronze Kettle. Wonderful, rich, glowing red produced all over the body. Form and color shows the master work of Nagoshi. Observe how carefully he has hammered out the handle. 1820-1840 A. D.
47. Blue and white Hawthorn Jar. Kang-hsi period, 1662. Teakwood stand. Height, 8 inches.
48. Teakwood Tray, shape of banana leaf ; carved by Miyoshi Osaka. Length, 3 feet.
49. Mitsuhiro Green Bronze. Long neck, melon shape. Teakwood stand. Height, 14 inches.

## NOTE.

Okumura Shozan, Modern Kenzan as he is called, is about sixty years of age, living near Teapot Hill, Kioto. He has unrivalled talent in copying famous Ninsei and Kenzan. The peculiar blue which none can imitate is known as "Kenzan" Blue. He attends to his work in every detail, hiring no assistants, as do most other potters.

50. Shozan Jar. This is probably one of the largest and finest specimens Shozan has ever done. It is profusely decorated with iris in Kenzan blue. With teakwood stand. Height, 30 inches.
51. Shozan Jar, decoration of plum blossom. Teakwood stand. Height, 12 inches.
52. Shozan Jardiniere, white lily decoration ; the black dash is his peculiar study of Kenzan style. Diameter, 12 inches ; height, 14 inches.
53. Old Ofuke Dish ; round vessel with heavy glaze and sweet painting of stork on outside. 1700 A. D. Diameter, 14 inches.
54. Satsuma Plaque, made by Chinju Kwan Satsuma, decorated with chrysanthemum. Silver medal was awarded this at the Kioto Exhibition in 1894. Dignified chrysanthemum decoration of pure Satsuma air, showing the contrast of so-called Satsuma, made in Osaka or elsewhere. Genuineness guaranteed.  
(I purchased this piece in person at the Exhibition on the opening day. B. Matsuki.)

55. Old Green Kutani Plaque. Hydrangea and robin decoration. 1830. Diameter, 14 1-3 inches.
56. Old yellow Awaji Plaque, made by 2nd Minpei. 1850. Diameter, 11 inches.
57. Shozan Plaque. Fine work in relief of chrysanthemum and garden fence; total absorption of Ninsei work. Diameter, 13 inches.
58. Carved figure of Niwo (Gods of Energy) Shakukongo carved by Giokuzan, Tokio. Beautiful miniature. Height, 11 inches.
59. Figure of Mishakukongo, mate to one above (No. 58). Height, 11 inches.
60. Chinese Hawthorn covered dish; Tao-kuang period. Marked, Tao-kuang nen sei. 1821. Height, 6 1-2 inches.
61. Taizan Vase. First Taizan's work. Wonderful combination of color in purple, yellow, and green. Height, 12 inches. 1840. Mark, Dai Nippon Taizan.
62. Green bronze temple lantern. Made by Shimasa Osaka. Height, 5 feet.
63. Porcelain bottle; design, monkey and monkey charmer. Genuine work of Kakiyemon Arita. Date, 1650. Teakwood stand. Height, 10 inches.
64. Sanuki Vase, made at Takamatsu Sanuki. Square shape, glaze yellow and green. 1770 A. D. Height, 8 1-2 inches.
65. Old Nabeshima Bottle, early Hizen ware, made at Lord Nabeshima's kiln, the blue used having been brought from China. One hundred fifty years old. Height, 7 1-2 inches.
66. Bronze vase inlaid with silver. Marvellous repoussé work made by Unkosai Kioto. Signed, 1750. Height, 10 inches.



67. Bronze Jardiniere. Floral design of silver inlaid, Sentoku brass and red bronze, jointed at centre of body and supported by three legs. Eighty years old; diameter, 13 1-2 inches; height, 8 inches.
68. Mishima Vase. Cream Mishima pattern carved on soft brown ground. Teakwood stand. Height 11 inches.
69. Iwami Incense Burner in form of lotus leaves, seed-pod stands on cover. About 1830. Height 8 inches.
70. Old basket with handle, used by chajin (Tea Society Men) to keep tea utensils in for travelling. Mark Unsai. Height, 7 inches.
71. Sanuki Vase. Rare work of Naohachi, celebrated potter of Province of Sanuki. Kochin chinese pattern in relief, in rich green and yellow. Mark Naohachi; teakwood stand. Date, 1840. Height, 11 inches.
72. Old silk embroidery. Embroidered on white Aya silk and lined with red momi. Size, 4 x 4 1-3 feet. About 1810.
73. Tambo bottle; dark brown glaze on heavy clay, beautiful iridescence on shoulder. 200 years old. Teakwood stand. Height, 12 inches.
74. Old Kioto Teapot made at Mizoro, Kioto, with lacquered cover.
75. Old Sake Pot by First Taizan; in form of bamboo trunk. Mark, Taizan. 1840.
76. Awaji Teapot. Fine specimen of First Mimpei. Being the pupil of Ninsei the decoration has his typical influence. 1780.
77. Old Awata Teapot, rich cream color glaze, probably by Hozan.
78. Old green Kaga Teapot; earliest green glaze. 120 years old.
79. Old Hirado Teapot.
80. Kioto Teapot, unglazed. Giokuro teapot by second Dohachi. 1830. Mark, Dohachi.
81. Sake Pot, used only at wedding ceremony. The lid is originally decorated differently according to Japanese custom. Made by First Taizan.



82. Banko Teapot ; early work of Yuseitsu. Richest green glaze in Banko ware. Mark, Banko Yuseitsu.
83. Tortoise shell Satsuma Teapot, hexagonal shape, black, blue, yellow, and green glaze dotted over soft, yet rich cream ground ; fine hard crackle. Magnificent specimen. 1770 A. D.
84. Takatori Bottle, shape of bamboo trunk. Height, 8 inches.
85. Old Ofuke Dish in shape of leaf with green glaze inside and out. 1700 A. D. Diameter 12 inches.
86. Old Oribe Dish ; leaf shape, partly glazed with green. Mark, Masaki. Diameter, 13 inches.
87. Old Porcelain Dish. Oblong Seto dish, uniform color of pale ruri blue over carved dragon and wave. Diameter, 10 inches.
88. Old Banko Dish, oblong, partly covered with green glaze. Mark, Banko Sensus Fuyeki. Length, 19 1-2 inches.
89. Square Lacquer Tray by Kinsai of Kaga. Inlaid changeable shells and colored patterns. 12 x 18 inches.
90. Old Bronze Vase, slender body, flaring into broad, flat, circular top. Teakwood stand. Height, 11 1-2 inches.
91. Mitsuhiro Bronze, dragon curling on the neck. Height, 11 inches.
92. Iron Vase. Beautiful repoussé work of Fugui and dragon rising from sea. 150 years old. Height, 10 inches. Teakwood stand.
93. Sentoku Bronze Vase. Mark, Sentoku nen sei. Height, 11 inches.
94. Scarlet Bronze Vase, hammered out ; extraordinary glowing color. Height, 7 inches.
95. Old Owari Porcelain Dish ; earliest porcelain Owari ware. Rarest specimen by famous Tamiji. About 200 years old. Mark, Owari.
96. Old Owari Dish ; irregular, shape of fans, also work of Tamiji. Brilliant gosu blue.

97. Old Owari Bowl; octagonal shape. Another work of Tamiji. Diameter, 9 inches.
98. Old Seto Dish. Diameter, 11 inches.
99. Silk Brocade, embroidery of Howo and Kiri on beautiful green ground. Perfect conventional pattern. 7 1-3 x 6 feet.
100. Shigaraki Jardiniere with glaze of rich green blue. Diameter, 16 inches.
101. Sanuki Vase. By Rinzo Yashima, after style of Kochin China. 1830. Teakwood stand. Height, 10 1-2 inches.
102. Kairakuyen Jar made at the Garden of Lord Kishiu, magnificent blue glaze over rich brown. Mark, Kai Raku Yen in gourd ring. Height, 7 inches. 1810-1820. Teakwood stand.
103. Old Banko Bowl by Banko Yusetsu. His characteristic green on inside and white cherry blossoms stencilled on vivid pink ground on outside of bowl. Rare specimen. Teakwood stand. Height, 5 1-3 inches. Signed.
104. Porcelain Bowl. By 4th Kiyomizu Rokubei, celebrated Kyoto potter. Teakwood stand. Diameter, 7 1-2 inches.
105. Old Awata Jar, uniform fine crackle with imperial crest chrysanthemum. 1780. Teakwood stand. Height, 5 1-2 inches.
106. Old Dutch covered box. This wonderful piece was brought to Nagasaki by a Dutch trader during Tenmei period (1780), and was given as a present to the Bugio (Governor) Matsudaira. Height, 5 1-2 inches.
107. Old Shidoro Jar. Square shape with limb. Peculiar stream of blue glaze over rusty yellow. 1780. Height, 8 1-2 inches.
108. Asahi Vase. Extraordinary glaze on porcelain; one hundred and fifty years old. Teakwood stand. Height, 12 inches.

109. Old Chinese Temple Lantern, hexagonal shape. Genuine teakwood frame with enamel and bead ornaments at the corners. Height, 26 inches.
110. Mulberry wood tray by Shunto. Beautiful carving of Miyazima Temple. Signed. 24 x 20 inches.

---

**Extra Sale. — First Day.**

2001. Old Gold Lacquer Box. Used by Nobles when travelling. Conventional grass design in gold on black lacquer ground. Metal ornaments at edge and corners. Date, 1780. Width, 24 inches; height, 15 inches.
2002. Old Lacquer Case; used to keep firearms in procession. Gold crest of Lord Suwa on Mother of Pearl inlaid ground. Date, 1780. Length, 42 inches.
2003. Old Silver Hair Ornament. Floral design, with eight chains and tiny bells. Solid silver work with coral. Date, about 1750.
2004. Old Silver Hair Ornament. Date, about 1750.
2005. Old Silver Hair Ornament. Butterflies on end of the chains. Date, about 1750.
2006. Old Silver Hair Ornament. Date, about 1750.
2007. Old Ivory Netsuke. Mice on Pomegranate. Signed, Mitsuhiro.
2008. Ivory Netsuke. Monkey. Signed, Setsu.
2009. Ivory Netsuke. Bat on Roof-tile.
2010. Old Wood Netsuke. Two Turtles on Lotus Leaf.
2011. Ivory Box. Toad on Persimmon.
2012. Old Ivory Netsuke. Two Quail. Signed, Kogen.
2013. Old Ivory Carving, Netsuke. Entire Kiyomizu Temple yard carved out in minute detail. By Kagetoshi. Signed.
2014. Silk Embroidery. Swarm of stork in chrysanthemum garden. Waterfall and distant Temple Pagoda carefully executed. Border of Shichin silk. Reverse side is old Sayagata Brocade. Size, 86 x 56 inches.





NO. 121.

### Second Day's Sale.

111. Porcelain Vase ; Full moon and clouds in Spring sky. Superb work of Shimidzu Rokunosuke. It is altogether marvellous to produce such a master piece of work on porcelain in one color. His decorative talent eclipses all Japanese "Cloisonné" makers. Height, 19 inches. Teakwood stand.
112. Shozan Jar ; by Okumura Shozan, celebrated Kioto potter (see the note, page 9). Iris design in Kenzan blue on dark cream ground. Height, 11 inches.
113. Shozan Jar with cover ; design, plum blossoms on current of water. Porcelain cover in imitation of lacquer. Height, 7 1-2 inches.
114. Shozan Vase ; design, iris on black ground. Teakwood stand. Height, 10 inches.
115. Shozan Jar. Plum blossom decoration. Teakwood stand. Height, 11 inches.
116. Shozan Jar with cover. Blue iris on crackled creamy ground. Height, 6 inches.
117. Shozan Bottle. Wonderful glaze work between iris design. Teakwood stand. Height, 10 1-2 inches.
118. Ancient Bronze Vase. Mythological figure supporting vase with dragon. Fine production of latter part of seventeenth century. Mark, illegible. Square teakwood stand. Height, 13 1-2 inches.
119. Benido (red metal) Bronze Jardiniere by Joyeki Nakagawa. Subdued, yet rich glowing color shows depth of good and rare bronze. Signed and sealed on original box. Date, 1810-1830. Diameter, 11 inches.
120. Old Bronze Jar with cover. Production of seventeenth Century.
121. Old Manchurian Lacquered Box. Decoration on cover, a train of goddesses descending from heaven on sacred clouds : decoration on inner lid, branch of plum blossoms.



This truly magnificent lacquer box was captured by a Japanese general in Hawajo near Moukden during late Japan-China War.

Who can deny that Japan owes her art to India, China, and Korea? Here we can see the instructive work of all great Japanese masters. Schools of Kanaoka, Kano, and Maruyama or even Moronubu and Harunobu, masters of famous Ukiyoye Print, may all adore this.

How graceful the attitude of her drapery as she sways in the very moment of descent! The combination of color is a perfect splendor; white, pinks, and soft olives actually glow between the delicate demarcation of their perfect lines. Diameter, 10 inches; height, 13 1-2 inches. Date, 1600. (See illustration.)

122. Old Lacquer Rice Box with Spoon. Banquet vessel for keeping hot boiled rice. Made by Kaji Kawa about 1804. Diameter, 8 inches.
123. Old Lacquer Stand used at Japanese banquet for serving sweets. Decorated with Wistaria in gold lacquer. Date, 1780. Height, 12 inches.
124. Old Lacquer Pitcher used by Japanese Nobles to hold hot water for toilet. Date, 1710. Height, 9 1-2 inches.
125. Ninsei Compartment Box with cover; perforated work. Two compartments, lined with gold. Date, 1750. Height, 8 inches.
126. Old Shigaraki Bottle; pale green and cream glaze covers the neck and shoulder. Teakwood stand. Date, 1800. Height, 16 1-2 inches.
127. Old Awata Bottle, gourd shape, decoration plum blossom in blue. Teakwood stand. Height, 9 inches.
128. Old Kishu Vase; royal purple and blue glaze. Mark, Kwai raku yen sei. Height, 12 inches.
129. Old Kyoto Vase; white plum branch under glaze. Hard brown clay. Teakwood stand. Height, 8 inches.







132  
133  
140

139  
137  
138

136  
135  
134

130. Porcelain Amidayama Bottle, pearl blue glaze over Chinese landscape in blue. Date, 1780. Height, 11 inches.
131. Silk Brocade; embroidered by Nomura of Kioto. Eagle and two heron on pinkish gray ground, conventional clouds scattered in upper portion of brocade, waves at the base. Border of Shichin silk. 5 1-4 x 4 1-6 feet.

## NOTE.

Satsuma Faience. Satsuma Ware is perhaps better known in this country and in Europe than any Japanese pottery. But only one kind is familiar—that of a finely crackled glaze decorated elaborately in gold and rich colors. Of the other kinds a very little seems to be known.

Among the many kinds to be found in Satsuma are Mishima Satsuma, Bekkode Satsuma, Seto Kusuri Satsuma, Chosa Satsuma, Sunkoroku Satsuma, Torafu Satsuma, Ibo Satsuma—all very rare and valuable. Early specimens of these are those of the sixteenth Century after many skilful Korean potters were brought back by Prince Shimazu when the triumphant return of Taiko's Korean Expedition was made.

132. Satsuma Vase; fine crackle. Awoi leaves painted in India ink under the glaze. Date, 1800. Teakwood stand. Height, 14 inches.
133. Seto Kusuri Satsuma Vase, so called; having Seto glaze, gourd shape. Superb glaze, hard reddish clay. Date, 1830. Height, 11 1-2 inches.
134. Chosa Satsuma Bottle; Black glaze around several open spaces, painted landscapes, and floral decoration. Date, 1750. Teakwood stand. Height, 14 inches.
135. Satsuma Bottle; charming form and fine crackle. Fugi Mountain and Sacred Dragon painted in blue under the glaze. Made at Nayeshirogawa in the Province of Satsuma. Date, 1790. Teakwood stand. Height, 9 inches.
136. Sunkoroku Satsuma Vase; so called from the fact that it was made after the style of Southern Chinese ware. Yellowish gray glaze over dark archaic designs. Date, 1720. Teakwood stand. Height, 6 inches.

137. Satsuma Vase. Rich, creamy color, fine hard crackle. Two dragons carved under glaze. Made at Nayeshirogawa in the Province of Satsuma. Date, 1780. Teakwood stand. Height, 6 inches.
138. Sunkoroku Satsuma Jar; vivid black and gray glaze. Date, 1760. Teakwood stand. Height, 13 inches.
139. Mishima Satsuma Bottle. Noble example of Mishima; beautiful gray glaze over minutely painted decoration of Japanese stripe. Date, 1820. Height, 18 inches.
140. Bekkode Satsuma Figure; the tortoise shell-like glazed Satsuma. Figure of Chinese hero Kwanu. Marked, Toyen. Date, 1780. Height, 13 1-2 inches.
141. Torafu Satsuma, known as Tiger skin Satsuma. Marvellously rich yellow and black glaze covers on side of bottle, the other being a rich creamy white, with extremely fine crackle. Teakwood stand. Date, 1800. Height, 10 inches.
142. Wooden Cabinet. Front of cabinet is of burnt cedar wood; the handles on the six drawers are of Shudo metal. Width, 23 inches; height, 16 1-2 inches; depth, 11 inches.
143. Old Basket Vase, made by Kawo of Kyoto. Signed. Height, 12 inches.
144. Enamel Incense Burner. Enamel on Porcelain, made by Koransha, Hizen. Beautiful symmetrical work in gold on rich olive green. Height, 13 inches.
145. Nankin Water Jar. Tao-kuang period, 1821. Rich blue and white decoration, two Chinese wise men. Height, 6 inches.
146. Square Pottery Box with cover. Old Horaku Ware; used as writing box. Date, 1810. 11 x 8 inches.
147. Old Imari Bottle, square shape; uniform dark coral red and rich blue. Decoration, Chinese landscape. 150 years old. Height, 10 inches.
148. Old Imari Bowl; 120 years old. Diameter, 8 inches.
149. Old Imari Dish, one hundred and fifty years old. Diameter, 8 inches.

150. Old Nabeshima Dish ; wonderful specimen of Nabeshima made in early part of eighteenth century. Diameter, 9 1-2 inches.
151. Old Akatsu Vase, decoration, dragon and cloud in dark blue. Height, 8 1-2 inches.
152. Old Akahata Bucket, pottery vase, peculiar gray glaze ; floral decoration. Height, 10 inches.
153. Old Takatori Vase ; one of the finest of this ware, superb glaze. Teakwood stand. Mark, Tei ichi.
154. Old Soma Bottle, gourd shape ; upper portion covered with rich, reddish black, iridescent glaze. Teakwood stand. Height, 8 inches.
155. Tamba Bottle, rich, black iridescent glaze. Teakwood stand. Height, 9 inches.
156. Pottery Bottle ; Agano ware of Buzen. Coarse, gray glaze. Date, 1800 A. D. Teakwood stand. Height, 11 inches.
157. Hozan, Square Vase ; rich, *écru* glaze. Copy from Chinese by 1st Hozan. 1810. Height, 13 inches. Teakwood stand.
158. Old Awata Vase, known as amamori awata (rain stain) on account of the stain. Landscape in blue. Teakwood stand. Height, 9 1-2 inches.
159. Old Shigaraki Bottle. Rare specimen. Teakwood stand. Height, 9 1-2 inches.
160. Silk Embroidery ; design, Pheasant in Spring field. Size, 38 x 30.
161. Old Metal Frame. Golden brass, made for Shinto Temple. Figure of poetess Komachi and her famous verse : —

ONONO KOMACHI.

Thy love hath passed away from me  
Left desolate, forlorn ;  
In winter rains how wearily,  
Thy summer past I mourn.

About two hundred and fifty years old.

162. Old Bronze hanging-vase in form of Carp. Length, 11 inches.
163. Old Iron Kettle ; grape vine and squirrel in relief.
164. Old Carved Wooden Monkey, representing Shinto dance.
165. Ancient Tokonabe Jar used for keeping tea. Peony blossom in relief on dark red ground. Early and rare specimen made by Shun sai. Marked, Shun sai Tsukuru. Date, 1680. Height, 15 inches.
166. Raku Tea Bowl ; by 8th Raku. Marked, Raku in double ring. Teakwood stand.
167. Tea Bowl, by Yeiraku Zengoro, a celebrated potter who received golden seal from the Lord of Kishu, about 1825. This specimen is stamped with the very seal. Mark, Kwahin Shiriu.
168. Hagi Bowl, smooth, gray glaze. Date, 1730. Diameter, 8 1-2 inches.
169. Old Ofuke Dish with handle. Unique stripe of brown and blue around the side. Diameter, 9 inches.
170. Pottery Water Jar ; diamond shape, creamy yellow glaze. Made at Akahata, Yamato. Height, 8 inches.
171. Porcelain Bottle, made at Otokoyama, Kii. Beautiful blue decoration. Teakwood stand. Height, 10 1-2 inches.
172. Takatori Dish ; oblong shape, with pearl blue glaze. Date, 1780. Teakwood stand. Length, 9 inches.
173. Nabeshima Celadon Bottle ; Beautiful pale green ; early specimen made about 1730. Height, 7 1-2 inches.
174. Chinese Pottery Bottle ; brought back from Formosa by Japanese Engineer. Shiny brown glaze on hard clay. Identification is not known. Teakwood stand. Height, 7 inches.
175. Old Banko Dish ; Fine pale green in color. Mark, Banko. Diameter, 5 1-2 inches.



176. Pottery dish in form of Kiri leaf, a grasshopper in relief outside of rim. By 2d Dohachi. Mark, Ninnami. Date, 1840.
177. Old Toyoraku Dish in form of shell ; green and brown glaze.
178. Shino Bowl in form of leaf. Made at Shino in the Province of Owari. Date, 1740.
179. Inro. By Shigenaga. Design, swallows hovering over waves, by renowned painter Okio. The golden waves are finished in togidashi lacquer. The fine rich red that covers the entire ground is seldom observed in Japanese lacquer. There is hardly a finer composition in all Inros. Ivory Netsuke is mice and lotus root, carved by Mitsuhiro Osaka. Date, 1740.
180. Kinkozan Jar. Marvellous tiger skin glaze. One of the most perfect works of modern Kinkozan. Teakwood stand. Height, 15 inches.
181. Shozan Vase. Painted pink flowers and upper portion covered with glaze. Copy of Ninsei. Teakwood stand. Height, 10 inches.
182. Shozan Bottle. Decoration, plum blossoms in rich Gosu blue. Teakwood stand. Height, 11 inches.
183. Old Tobacco Pouch with Pipe Case, carved out of bamboo. Signed, Nanyo.
184. Kochin China Teapot. Rich yellow and green glaze over dragons carved in clay. Date, about 1710.
185. Takatori Water Jar, made in the Province of Chikuzen. Covered with thin white glaze over brown. Date, 1830. Height, 7 inches.
186. Kutani Bottle. Green enamel Chinese landscape, bordered with floral design. Date, 1790. Height, 8 inches.
187. Gold Lacquer Inro ; production of Genroku Period (1688-1703). Wonderful composition of color rendered by age and usage. Old wooden Netsuke in mask design.



188. Old Iga Jar. Thin white glaze over brownish underglaze. Coarse clay. Date, 1750. Teakwood stand. Height, 3 1-2 inches.
189. Takatori Wine Bottle; stone ware with black and reddish glaze on one side and yellow on the other. Date, 1700. Teakwood stand. Height, 8 inches.
190. Old Awata Bowl, made by Giozan Kioto. With silk net bag. Date, about 1750.
191. Porcelain Bowl, Koto Ware, in Province of Omi. This ware was made at a private factory of Prince Ii of Hikone. Since the factory was situated on the Eastern shore of Lake Biwa, it was called Koto (east of the lake). It is very interesting to compare this ware with Arita and Kaga, as the blue and green enamels used in this ware are even finer than "Hachiroye Kinrande." This ware is highly estimated for its artistic qualities. Unusual specimen. Mark, Koto; date, 1800.
192. Gold Lacquer Inro. By Koman. Tiny round form, silver rings to keep cords. Nitsuke by same artist.
193. Old Sword Guard, by Meiju Umetada. Floral decoration of gold, silver, and shakudo, inlaid. Fine quality of golden brass. Signed.
194. Shozan Jar. Profusely decorated with white plum blossoms on cream ground. Teakwood stand. Height, 11 inches.
195. Seto Jug. Kiseto Ware, made at Seto in Province of Owari. Date, 1720. Height, 7 inches.
196. Pottery Bowl, made at Sasashima, Owari. Cream and dark gray glaze. With the Imperial Crest of the chrysanthemum. Mark, Sasashima. Date, 1830. Height, 3 1-4 inches.
197. Old Silk Embroidery, Temple Hanging. Design, Sacred Eagle in chrysanthemum garden. Bordered with Donsu silk. Size, 6 feet 4 inches x 4 feet 5 inches.

198. Long Sword. Length of blade, 26 inches. Hilt wound with whalebone ; scabbard of lacquered wood, Tsuba, dragon and figure of man of bronze and gold inlaid.
199. Long Sword. Length of blade, 30 inches ; scabbard decorated with waves and sea-birds in gold Tolgicashi lacquer.
200. Old Bronze. Dragon-blood color over green bronze ground. Beautiful, smooth specimen. Date, 1800. Teakwood stand. Height, 11 1-2 inches.
201. Iron Kettle in form of hut, by Sujuki, a celebrated iron kettle-maker at Nambu in the Province of Rikuchu. Mark, Sujuki Shigekichi.
202. Bronze Waterpot, with hinged lid at the mouth. Repoussé on cover and handle. Date, 1750.
203. Mitsuhiro Bronze Vase. Green bronze, slender, with toad on the neck. Teakwood stand. Height, 12 inches.
204. Old Kutani Bowl. Porcelain in red and gold ; outside is painting of Seven Wise Men, inside is elaborately decorated with coral red. Date, 1850. Height, 4 1-2 inches. Mark, Kutani. Teakwood stand.
205. Old Hirado Bowl ; thick black and brown glaze over fine white clay. Unusual representation of Hirado. Date, 1720. Teakwood stand.
206. Blue and White Hirado Jardiniere, made by Gihei Otsuka, Arita. Concave handles on both sides. Received silver medal at Kyoto Exhibition, 1894. Diameter, 11 1-2 inches ; depth, 9 inches.
207. Kakemono ; Painting on silk by Hoyen Kagawa, celebrated Kobe artist. "Fish in stream, overhung by cherry tree in blossom."
208. Kakemono ; Tiger, painted on silk by Ganku, a great master, and the founder of Kishi School. Date about 1840. Genuineness guaranteed.

209. Kakemono, by Keibun. Painting of Yoshino Mountain in cherry season; simple but exquisite work. Date about 1860.
210. Old Shigaraki Jar. Light green glaze covers one side, while the other side is dotted with blue. Date, 1780. Height, 3 feet.
211. Gold Lacquer Inro. Design, sun rising over water. Upper portion inlaid with Giobu Nashiji. Lined with fine gold lacquer. Maker, unknown. Date, 1800.
212. Shozan Jar. Painting of thirty-six Poets and Poetesses in Court attire. Height, 11 inches.
213. Two fold, Silk Embroidered Screen on Black Satin, made by Takashimaya Kioto, of renowned reputation. Fine brown lacquer frame two panels, each 25 inches wide, and 50 inches high hinged with solid silk cord.  
This entire screen forms a most wonderful piece of needle-painting, picturing a mass of Hori Kiri iris. The color scheme is exquisitely restful, and so faithful to the nature of the flowers. A plum tree in blossom and stream of water is painted on gauze on the reverse side.
214. Eight fold Mantel Screen. Inner mat of old brocade painted with lions, peony flower, and pine tree. Signed, Tosa Mitsunori. Date, 1800. Height, 19 inches.
215. Shozan Vase. Made by Okumura Shozan, Kioto. Painting of Ancient Japanese ship, showing detail of whole construction and costume of passengers, sailors, etc. Teakwood stand. Height, 14 inches.
216. Okumura Vase. Iris decoration in Kenzan blue; charming form. Teakwood stand. Height, 14 inches.
217. Shozan Vase. Iris decoration in blue. Teakwood stand. Height, 6 inches.
218. Shozan Vase. Decoration of poppy against mirror, black glaze. Fine work of Okumura Shozan. Height, 12 inches.

219. Shozan Vase. \* Bottle shape ; Iris decoration against black and gold ground. Height, 14 inches.
220. Shozan Hanging Vase, decorated with crests. Copy of Kenzan's work.
- 

**Extra Sale. — Second Day.**

2016. Suit of Japanese Armor. Fine specimen of eighteenth century.
2017. Old Sword Guard. Inlaid silver on iron, has perforated ornament. Korin style. Date, 1650.
2018. Old Sword Guard. Wonderful yellow bronze ; extremely rare. Old letters and waves inlaid in silver. Signed, Shoami Masanori. Date, 1620.
2019. Old Iron Sword Guard. Inlaid with various metals. Date, 1650.
2020. Old Iron Sword Guard. Fine wrought iron inlaid in gold. Shakudo band ornaments the rim. Date, 1575.
2021. Old Iron Sword Guard. Perforated, swallow pattern, in charming Korin style. Date, 1700.
2022. Old Iron Sword Guard. Two styles of dragon carved out on both sides. Fine specimen of iron work. Signed, Yumin Choshu. Date, 1700.
2023. Old Fruit Basket. By Takusai.
2024. Old Metal Mirror, with gold lacquer stand.
2025. Old Basket, with long handle. By Kawo.

### Third Day's Sale.

#### NOTE.

Buddhist Objects. Buddhism has been promulgated throughout Japan for the last thirteen centuries. This religious contact with China and Korea was the source of development of art, and Buddhism was the central and culminating factor.

Ornamental as well as offering objects in the Buddhist Temple are of great artistic merit and are by no means common nor easy to be obtained. This collection was made during the last seven years in cities of Nara and Kioto, where famous old Buddhist temples are situated.

Term "Golden Brass" means thick, gold plate over polished brass. It is valuable because of the texture of bronze, naturally rough in spite of careful polishing. A surprising amount of gold is used before it is completely plated.

Objects used in Buddhist Temples are either made by order of the priest or contributed by Nobles and Samurais, and often made without regard of cost. They are impossible to be duplicated at the present day.

221. Standing Buddha in Shrine. Date, 1700. Height, 19 inches.
222. Golden Brass Bell. Used in Buddhist religious ceremony. Date, 1650.
223. Figure of Marishiten (God of War) in shrine. Strange animated expression; carved by Seishiku in Seventh year of Keicho Period (1603). Inscription and sign. Height, 11 inches.
224. Lacquered Lotus Offering Stand, used before altar heaped up with sweets, the Lotus flower itself forming vessel. Height, 11 inches.
225. Monastery Wine Jug. Iwakurazan ware, used in Buddhist monastery. Signed, Iwakurazan. Date, 1730. Height, 10 inches.
226. Golden Lotus Flowers with Bronze Vase. Used on altar in front of Buddha's shrine. Gold lacquer over carved wood ground. The bronze vase with elephant-head handles, originally made to match. Hard to obtain. Date, 1680. Height, 40 inches.







NO. 230.

227. Shrine of Jizo (God of Road). Figure is carved out of white sandal wood and covered with glass. The gold lacquer shrine is opened at front and rear with hinged doors. Date, 1700. Height, 6 1-2 inches.
228. Wine Bottle with silk cord. Used in Buddhist Temple for serving wine. Made at Banko in the Province of Ise. Mark, Senshu Fuyeki. Height, 8 inches.
229. Figure of Kwan-non. Brought from Formosa. Represents Kwan-non's meditation. Date, 1500. Height, 9 inches.
230. Old Bronze Jar. Stands 22 inches high; diameter, 23 inches. A dragon coiled about the upper part of jar meets a second dragon coiled about the stand which forms the base.
- These two parts form the body of this grand piece which is one of the largest bronzes ever cast by Seimin. Date, 1720. (See Illustration.)
231. Golden Brass Banner. Hangs in Buddhist Temple on post. Generally contributed to temple as thanksgiving offering in fulfilment of invocation for recovery from sickness. Fine chisel work all over the surface with four bells at foot of the panels. Date, 1650. Length, 48 inches.
232. Temple Bell; melodious tone. Used in Buddhist religious ceremony. Date, 1700.
233. Lacquered Scripture Desk, in red and gold lacquers. Lotus flowers elaborately carved and worked into upper part of each partition. Was formerly in Temple of Shosazan in the Province of Harima. Date, 1760. Length, 58 inches; height, 23 1-2 inches; depth, 18 inches.
234. Lacquered Side Desk; small size. Came from same temple as No. 233. Length, 25 inches; height, 16 1-2 inches; depth, 14 inches.
- 234<sup>1</sup>/<sub>2</sub>. Lacquered seats upon which Buddhist priest of rank sat down during the service. 24 inches square; height, 11 inches.
235. Golden Brass Banner. Mate to No. 231.

236. Silk Temple Hanging. Embroidery of Kwan-non as Goddess, holding Sacred Lotus. The lines of the drapery, together with the swaying canopy held over the head of the Goddess by her attendant are gracefully wrought on a ground of royal yellow Donsu silk, bordered with old brocade in dark rich coloring. The gold thread-work combined with the subdued coloring of the whole endows it with marvellous beauty.
- The reverse side is lined with cut velvet, bordered with old gold brocade. Length, 7 feet, 2 inches; width, 5 feet, 8 inches.
237. Chinese Porcelain Vase. Ching-lung Period (1736). Rich red and blue Shinsha glaze covers peach tree carved in relief under the glaze. With teakwood stand. Height, 11 inches. (See Illustration.)
238. Chinese Celadon. Yang-ching Period (1723). Color, beautiful tea-green. Teakwood stand. Height, 16 inches. (See Illustration.)
239. Chinese Jar. Kang-hsi period (1662). Lions are enamelled with green and red monochrome glaze. Upper portion is elaborately painted in brocade pattern and hawthorn border at the base. The faint horizontal line in the middle indicates that the jar was originally fashioned upon the wheel in two pieces. Fine iridescence. Teakwood stand. Height, 9 inches.
240. Green Kochin China Jar. Yellow Karakusa design on green ground. Teakwood stand. Height, 14 inches. (See Illustration.)
241. Ancient Korean Jar. Hard stoneware. Dotted Sun-koroku painting in black on cream white glaze. Vivid iridescence on black glaze. About four hundred years old. Teakwood stand. Height, 9 1-2 inches. (See Illustration.)
242. Ancient Korean Jar. Hard stoneware. Illustration of fire on Abo Palace in Sunkuroko black. Vivid iridescence. About four hundred years old. Teakwood stand. Height, 8 1-6 inches. (See illustration.)



237  
242

240  
296

238  
241





243. Bronze Incense Burner, in shape of lotus flower and seed pod. Five Sanscrit letters carved out on the cover. Height, 9 inches.
244. Figure of Buddha, reclining on lotus flower for a pillow. Represents "Nirvana" Buddha — the death. Gold lacquer stand. Length, 8 inches.
245. Bronze Buddhist Scripture Case. Specimen of fine, old bronze, dug out of ground from under temple. It was used to keep the sacred scripture in and was buried in sacred spot. Translation of inscription is as follows, namely : —
- Fifth day of ninth month of fifth year Jo-an, 1175.
- Height, 12 inches.
246. Old Lacquer Case, used to hold firearms in procession of Nobles. Decorated with butterfly crests in gold ; and with red silk tassel. Length, 36 inches.
247. Figure of Kwan-non (God of Mercy). Cast of Mitsuhiro, celebrated bronze maker. With original box. Height, 6 inches.
248. Old Shigaraki Bottle. Dark brown glaze dotted with yellow. Date, 1750. Teakwood stand. Height, 13 inches.
249. Old Ramma Wood Carving. Tiger and plum tree in blossom. This was one of a pair of fretwork carvings over the threshold in a temple, Nara. Wonderful example of carving of early part of the eighteenth century. Huge tiger carved in bold relief in middle. Date, 1720 ; width, 37 inches ; length, 5 feet, 14 inches.
250. Old Wood Carving, Temple Ramma. Sacred Phoenix on pine tree ; richly colored, but softened down by many ages. Date, 1800. Length, 14 inches ; height, 65 inches.
251. Imari Vase, made by Fukawa, Koransha, Imari. Enamel on porcelain. See No. 144. Height, 18 inches.
252. Hanging Bronze Buddha. Temple Post hanging frame ; remarkably fine expression of Buddha. Rare work of the sixteenth century. Diameter, 9 inches.



253. Old Bronze Covered Bowl; used for cooking food in the temple. Date, 1800. Diameter, 10 inches; height, 10 inches.
254. Figure of Fudo in gold lacquer lined shrine. Height, 11 inches.
255. Lacquered wood Altar Incense Burner. This is used only in Buddhist Temple for burning powdered incense, called makko. (With tools for arranging the ashes). Height, 13 inches.
256. Buddhist Drum. Highly decorated with dragon and sacred clouds.
257. Shrine, Benzaiten (Goddess of Wealth) carved from white sandal wood seated on a golden lacquered rock, the whole covered with a glass globe. Date, 1750. Height, 6 inches.
258. Old Karatsu Bottle; gourd shape, partly glazed with white. Painting of landscape on white ground; the lower part is glazed in rich Amagusuri. Date, 1700. Height, 16 inches.
259. Silk Embroidery. Sacred dragon and cloud in blue and gray against pink. Whole piece is covered with nuidame needlework. Size, 86 inches x 56 inches.
260. Celadon Incense Burner. This beautiful piece was made at Nabeshiman and known as Kinuta Celadon. Graceful form and fine color. Teakwood stand. Height, 4 inches.
261. Old Bronze Temple Lantern. Came from temple in Shiba, Tokio. Made for shrine of Tokugawa with crest on each side of hexagon. Date, 1800. (With chain).
262. Wooden Gong. Used in dining hall of monastery to summon inmates to meals.
263. Bronze Vase. By Nagoshi Yechigo no Kami, bronze maker to Kyoto Palace about 1720-1750. In form of morning glory with handles of wonderful curvature. Signed, Yechigo no Kami. Teakwood stand. Height, 12 inches.

264. Okumura Vase, by Kosen, son of Shozan Okumura. Decoration, blossoms of Wistaria. Teakwood stand. Height, 12 inches.
265. Shozan Vase. Decorated with pink flowers after the style of Ninsei. Teakwood stand. Height, 11 inches.
266. Shozan Vase. Design, peony and butterfly; superb color. Height, 11 inches.
267. Old Buddha, Lacquered wood carving, inlaid with precious stones on forehead and crest. Date, 1500. Height, 11 inches.
268. Temple Bell; fine, melodious tone.
269. Temple Bell; fine, melodious tone.
270. Temple Bell; fine, melodious tone.
271. Silver Buddha Shrine. A round shrine with cone-shaped dome; golden brass Buddha within. Gold and red lacquer stand partly ornamented with metal work. On each one of the hinged doors and on the planks of the portico are chiseled ornaments of the sacred lotus flower and leaves. Eternal sacred fire in silver work finishes the dome of the Shrine. Carved roof and eaves are faithfully carried out in minute detail and tiny bells are suspended from the roof. Date, 1800.
272. Golden Lotus Staff. Bronze, thickly plated with gold, in form of Sacred Lotus bud and leaf. When the curled leaf is swung aside, the front petal of the bud drops down disclosing a Buddha carved out of white sandal wood, standing within the bud. This was carried by Buddhist Priests of high rank when they went outside of the monastery. Date, 1750.
273. Porcelain Bottle. Kameyama, in the Province of Hizen. Tower of Tendai San, China, painted under the glaze. Delicate gosu blue. Date, 1750. Teakwood stand. Height, 10 inches.
274. Bizen Bottle. Made at Mushiake Bizen. Chinese lily carved on the glaze. Hard, reddish clay. Height, 11 inches.

275. Seto Bottle. A touch of bamboo blue glaze on the front like a single leaf of bamboo. Color of body glaze is dark brown. Teakwood stand. Date, 1700. Height, 13 1-2 inches.
276. Temple Canopy. Black lacquer frame lined with gold. The four hanging draperies at sides and four banners at the corners are made of costly Chakinran brocade, with flat, real gold thread, woven into the silk. It is very rare, for the reason that this particular class of silk was burned by the natives to realize the gold in it. Just as great a number of gold lacquer objects were destroyed at the time Imperial Restoration 1867. This canopy was in the inner shrine of Saga Temple in suburbs of Kioto. Rarest and most graceful form of canopy ever obtained. One of the gems of this collection. Date about 1700.
277. Mimpei Shell Dish. Rich yellow glaze over design of two chrysanthemums carved in relief on the clay. Inside is cream white with beautiful crackle. Diameter, 9 inches.
278. Shrine of Buddha and Disciples. Represents an assembly of Buddhist followers; four Bodhisattva and Rakans surrounding the Buddha on the mountain of Rioju. The shrine is elaborately ornamented with sacred phoenix and dragon. Date, 1750. Height, 15 inches.
279. Covered Dish; Momoyama design, cherry blossoms and maple, made by 3d Dohachi of Kioto. Fine fiance. Signed, Momoyama. Diameter, 7 inches.
280. Lacquered Stand. Profusely decorated with golden brass with chiseled design of Karakusa. Used in Shinto Shrine to hold offering before altar. Inscription on bottom is as follows:—

28th August, 5th year of Kyoho (1721) Kajiha Bo Shingu.

Diameter, 15 1-2 inches; height, 13 inches.





NO. 281.

281. Standing Figure of Fudo. While this carving was in the possession of the collector much has been said, both in Japan and in America, as to whose work this belongs. But it behooves the collector to make his independent estimate. Last spring he entered temple after temple wherever the famous Fudo Shrine was to be found, in Kioto, Osaka, and Tokio, and asked for "Kaicho" — (Opening sacred Shrine doors) — after offering, and satisfied himself that this Fudo must be the work left by Unkei, the celebrated glyptic of the ninth century. For the comparison itself was a revelation. The expression of the eyebrow of this figure is known as "Jitsu Getsu no Nirame," or Sun and Moon expression, which was the hidden art possessed by Unkei only. Observe how the left eye which represents the sun, is broader than the right indicating the moon, to say nothing of the grand posture and animating yet quiet flame on the back; the composition of the right arm and hip suggesting in force and grandeur the greatest carver that ever lived in Japan. Height, 22 inches. (See Illustration.)
282. Temple Hanging; silk embroidery of dragon. Used over the threshold in the temple. Length, 105 inches.
283. Lacquered Tray, 19 x 13 inches. Gold Korin design representing two sheets of fan. One has design in bamboo, the other of storks both inlaid with Mother of Pearl. Made by Kobayashi of Kaga. Received silver medal at Kioto Exhibition, 1894.
284. Kozen Vase. Bamboo leaves on black glaze. With teakwood stand. Height, 7 1-2 inches.
285. Awata Wine Kettle. Made by 1st Taizan. Design, storks and conventional cloud. Date, 1830.
286. Shrine of Six Amida Buddha. Figures carved from white sandal wood are seated in two rows in the shrine which is lined with gold lacquer. The door opens in double swing like screen.
- This was carried by warriors on their back, fastened by a cord passed through the two metal rings. Date, 1650.



287. Nanbu Iron Kettle. Made by Sudzuki, celebrated iron kettle maker in Nambu in the Province of Rikushu. The surface is like the bark of the pine tree. The cover is made of a fine old sword guard and hilt, with solid silver ring handle. Evidently the maker made the kettle to fit this unique cover, the result being a most charming kettle. Signed.
288. Large Tea Bowl. By Yeiraku Zengoro, famous potter in Kyoto. New Year's decoration on exceptionally hard clay with marble-like crackle. Signed.
289. Raku Bowl. Pale tea green glaze over yellow.
290. Tsushima Bowl. Made on island near Fusan. Looks a great deal like Korean pottery.
291. Raku Bowl; by Raku Kichizaemon. Unusually hard clay, strong red dashed with green and white. Rare specimen. Signed. Date, 1770.
292. Old Bronze Hibachi. The shape being like that of a Samisen (Japanese musical instrument) was known as Samisendo inlaid silver decoration of fruit basket with pomegranates, etc. Seamed corners are fastened with unique metal work. Date, 1720. Seal, Unkosai.
293. Six pieces old Imari plates. Blue and white decoration of Fugi Mountain and Bay of Shimidzu. Back of each plate bears the marks of the three needles upon which it rested in the kiln as was the manner of firing up to 1750. Diameter, 8 1-4 inches.
294. Seven pieces old Imari plates. Date, 1700. Diameter, 9 inches.
295. Silk Temple Hanging. Two angels playing with music on each side of Sacred Lotus. The background is of the finest quality of Saya silk, woven in alternate squares of red and blue. Bordered with brocade. Size, 9 1-2 x 3 feet.
296. Plain White Korean Jar. Fine cream colored glaze. Teakwood stand. Height, 9 1-2 inches. (See illustration opposite page 28.)

297. Toyoraku Vase. Lizard crawling up side of vase. Wonderful glowing color covered with faint green glaze. With teakwood stand. Height, 9 1-2 inches.
298. Silk Fukusa. Embroidery of boat loaded with treasures; a stork flying at the helm guides the boat on its voyage. Lined with red Kage crêpe. Size 35 x 29 inches.
299. Piece of Old Kohaku Silk, used for Obi. Black figure on olive ground, gold thread woven in. Length, 4 yards; width, 26 inches.
300. Carved Wood Rabbit with stand. Work of Takusai Tatekawa in the Province of Shinano. Date, 1800. Height, 8 1-2 inches.
301. Large, Old Ramma. Colored fretwork. Design, tiger in bamboo forest. Mate to No. 249. Width, 37 inches; length, 5 feet 14 inches.
302. White Hirado Vase. Conventional waves and storks in clouds are exquisitely carved in relief under the glaze. Teakwood stand.
303. Kishiu Vase. Made at private kiln of Prince Tokugawa at Wakayama Kishiu. Glossy dark purple and blue glaze on fine hard clay. Splendid specimen of early Kairakuyen (Garden of the Prince). Date, 1830. Mark, Kairakuyen Sei, written under the glaze. Height, 11 inches.
304. Kyoto Water Jar. Blue and white porcelain; probably made by Shuhei. Date about 1850.
305. Kyoto Vase. Very interesting piece. Quality at once recalls Ninsei. No mark. Height, 9 inches. Teakwood stand.
306. Kyoto Faience Bowl. By 1st Hozan. Outside is lacquered with red over a design of Seven Wise Men of Bamboo Forest carved on the clay. Inside has a branch of plum tree in blossom painted on a black ground. Signed, Hozan. Date, 1780. Height, 6 inches.

307. Banko Dish. Arrowhead leaves and blossom painted in centre of dish which has a border of the imperial chrysanthemum in red. Date, 1830. Diameter, 8 1-2 inches.
308. Buddha in Iron Repoussé. Grand work of Teijio. Buddha meditating on rock. Lines of drapery in superb repoussé. Cloud below and halo above demand speechless praise. The maker, in this design, inaugurated a style of Kana School. Date, 1740-1760.
309. Santa Celadon Dish. In form of maple leaves well grouped together. Date, 1830. Diameter, 8 inches.
310. Ancient Silk Tapestry in Kakemono. Standing figure of Kwan-non on two lotus flowers. Most glorious silk tapestry of the eleventh century in existence. According to the judgment of high art authority in Japan, this was done by Princess Honiyo. Mounted with rare old brocade and metal ornaments.
311. Akatsu Dish, in form of basket with handle. Diameter, 8 inches.
312. Brass, Temple Hanging Lantern. Diamond shape, elaborately carved out. With chain.
313. Shozan Jar. Plum blossoms painted in five panels. Upper and lower borders are in conventional ivy design. Beautiful drawing in blue under the glaze. Signed, Okumura. Teakwood stand. Height, 11 inches.
314. Mitsuhiro Bronze Vase. Dash of dragon blood against magnificent green. Teakwood stand. Height, 12 inches.
315. Bronze Dish; shape of Kanaye, ears in form of imp. Height, 7 1-2 inches. Diameter, 8 1-2 inches.
316. Nambu Iron Kettle. By Suzuki of Morioka. Beautifully wrought iron work of shells and crabs. Signed, Suzuki.
317. Old Bronze Vase. Vigorous dragon and floral design in relief. Date, 1830. Teakwood stand. Height, 18 inches.

318. Old Basket with handle on side. Signed, Morimasa.
319. Ancient Gourd. Sixteen Rakan (Buddhist followers) carved all over the surface. By Takeda. Signed. (Pease examine with magnifying glass.)
320. Shidoro Sake Bottle ; flat, gourd shape, made in Province of Totomi. Used to hold sake in pleasure boat. Length, 11 inches.
321. Large Imari Bowl. Painted dragon in black cloud. Made by Fukagawa, Hizen. Diameter, 14 1-2 inches ; height, 7 1-2 inches.
322. Mulberry wood Tray, shape oblong. Carved monkeys by Sessai, Miyajima. Diameter, 15 inches. Signed. 25 x 17 1-2 inches.
323. Mulberry Wood Tray. Leaf shape.
324. Round Mulberry Wood Tray. Carved illustration of scenery of Miyashima Temple. Diameter, 15 inches.
325. Old Seto Jar. In form of lion's head. Date, 1800.
326. Kikko Vase. Floral decoration on orange glaze. Mark, Kikko. Height, 11 inches.
327. Pottery Incense Burner. Shino Ware, in form of Fugi Mountain clad in snow. The lower part is decorated with forest scenery. Date, 1700.
328. Shigaraki Jar. Karakura design under blue glaze. Diameter, 14 inches ; height, 10 inches.
329. Shigaraki Jar. Tiger skin glaze. Diameter, 14 inches ; height, 10 inches.
330. Pottery Lantern with iron chain. In form of hut. Made at Seto in Province of Owari.

---

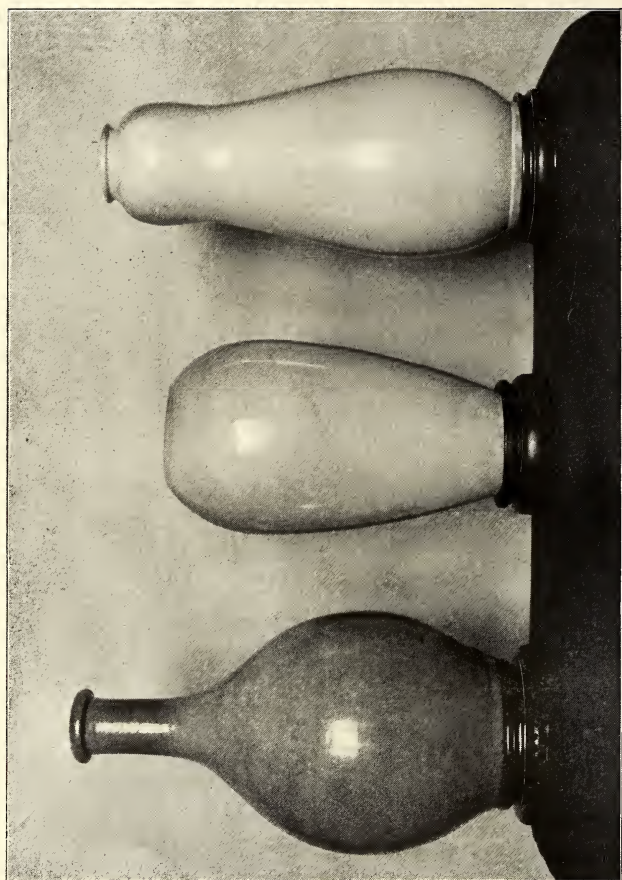
**Extra Sale.—Third Day.**

2031. Golden Brass Tokko. A symbol of meditation. 1700.
2032. Holding Incense Burner. In form of lotus flower, with cover used by the chief priest in a temple during the ceremony. 1750.

2033. Gold Brass Lotus. Used in bronze vase before Altar. 1750.
2034. Iron Niyoi. Buddhist object used for symbol of meditation. 1700.
2035. Sacred Hossu. White brush carried by priest. Symbol of "Keeping off the Evil Spirit."
2036. Iron Niyoi. Symbol of meditation. Beautiful iron work in form of Awoi leaf. 1700.
2037. Golden Brass Tokko. Beautifully carved. Very rare. 1750.
2038. Small Tokko. One of a very old specimen; gold nearly rubbed off by usage. 1500.
2039. Small Tokko.
2040. Red Lacquer Priest Chair.
2041. Brass Carved Tray. Used to keep up the lotus flower petals which the priest throws away during ceremony.
2042. Silk Brocade Temple Banner. Given to the temple by the Buddhist as a token of thanksgiving for recovery from sickness. Date, about 1780.
2043. Mate to No. 2042.
2044. Golden Brass Lotus Flowers, with bronze vase. Old and fine work. Date, 1680.







339

340

341

### Fourth Day's Sale.

- 331. Large Colored Print. Scene, Entrance Gate to Yoshiwara, by Utagawa Toyokuni, the greatest pupil of Toyoharn. Date, about 1809.
- 332. Tall Colored Print, by Yeisen, the greatest pupil of Yeizan. "Girl standing with man's outer garment." Date, 1840.
- 333. Tall Colored Print. Girl reading love letter. By Kikugawa Yeizan. Contemporary of Hokusai and was his great rival. Date, 1820.
- 334. Tall Colored Print. Landscape by Yeizan. Very rare Print signed Keisai. Date, 1840.
- 335. Large Colored Print. Waterfall of Ono, by Hokusai. Remarkably well preserved. Signed, Zen Hokusai. Date about 1846.
- 336. Colored Print. Country scene; carpenters at their work. Glorious proof-print. Date about 1820.
- 337. Colored Print. Shinto Ceremony, on moonlight night, By Hokusai. Signed, Zen Hokusai. Date about 1820.
- 338. Small Colored Print. Girl with attendants, by Suzuki Harunobu. One of his most beautiful out-door subjects. Date about 1760.

### NOTE.

Difference between Satsuma and Awata. These two wares are somewhat similar in their clay and glaze, and often they are greatly puzzling. The important feature in comparison is the difference in weight. Satsuma is heavier than Awata. Another; Satsuma has hard and sharp crackle like marble, while Awata has soft, warm crackle like ivory.

The following are some of the most valuable Satsuma specimens among the collection.

- 339. White Satsuma Bottle. Chosa faience, made at Chosa in Province of Osumi. Plain white, fine, hard crackle. Oldest white Satsuma in the collection. Date, 1600. Teakwood stand. Height, 13 inches. (See illustration.)

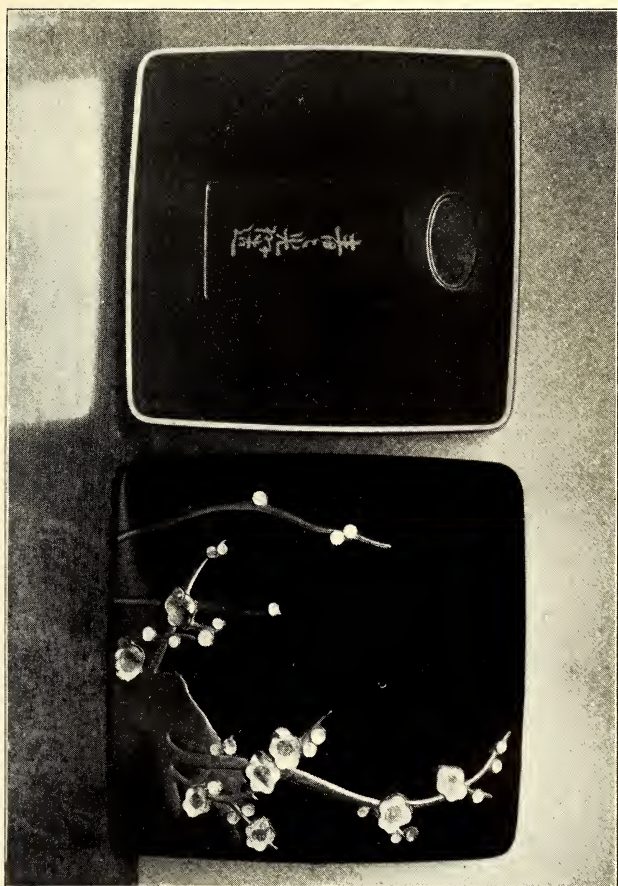
340. White Satsuma Vase. Another glorious, plain white Satsuma. Hard, marble-like crackle. Date, 1750. Height, 10 inches. (See illustration.)
341. Ivory-white Satsuma Vase. This is Satsuma of all Satsuma, because of perfection of quality, color, and form. It at once reminds you of, and has the feeling of, ivory which is so rare in Satsuma, though common in Awata. Date, 1800. Height, 12 1-2 inches. (See illustration.)
342. Ancient Awata Bottle. Square shape, decorated with pine, bamboo, and plum under the glaze. Has wonderful rain stain, which was known as "Amamori Awata." One of the finest specimens. Probably made by Ninsei. Date, 1700. Height, 7 1-2 inches.
343. Awata Covered Dish. This was originally bought by the collector for Satsuma, but mark found on the bottom faintly discernable under the glaze "Kinkozan." It is glorious old Kinkozan Awata. Date, 1770.
344. Old White Awata Bowl. Thin and soft crackle like a piece of ivory. Date, 1800.

## NOTE.

Korin and Kenzan. These two remarkable brothers who were destined to be "Monarchs of Art Creation" in Japan from early part of Genroku to Kioho Period (1688-1715), were born in Kioto. Korin, the elder, first studied painting in Kano School, and later followed Sotatsu; but his celebrated lacquer works are due to an intense admiration and study with an aim to equal, if not surpass, the work of the famous Honnami Koyetsu (1600 A. D.).

Kenzan, the younger brother, possessed great genius in pottery making, and his countrymen with one accord rank him with Nonomura Ninsei. (Note on Ninsei will appear later.)

345. Lacquer Writing Case. By Ogata Korin. Design, plum tree in blossom inlaid with Mother of Pearl on black lacquer. Reverse side is a half-moon. The cover is of a graceful convex form. An air of the classic purity of Kano and a freedom of uncommon delicacy of Koyetsu are achieved in this masterpiece. Signed, Sei sei Korin. Date about 1690. (See illustration.)











NO. 346

346. Kenzan Dish, with original box. Ogata Kenzan first made his pottery at Narutaki Village, north west of Kyoto Palace, hence his name, Ken (north west) zan (mountain). Later he went to Iria Village, a suburb of Tokio.

The dish, used for holding sweets at Japanese Tea Ceremony, is decorated with flowers. The inside shows the stems of grass covered with morning dew. How refreshing!

A marvellous production on such a hard concave surface where one would least expect it, like the famous Japanese Tea Gardens within the enclosure of rusty fence; you are amazed beyond expectation when you peep into it. Kenzan's resources are fascinating.

Another important feature is the original box on which he has signed his name and sealed. The only specimen the collector has seen during the last ten years. Mark on dish, Kenzan. Sign and seal on box "Kenzan Shinsho." Height, 5 inches. Date, about 1715. (See Illustration.)

347. Silk Kakemono. By Korin. Chrysanthemum in India ink and gold. Originally was one of the panels of a screen in the palace of Prince Kujio, Kyoto. Magnificent example of his work. (1700.) Signed, Korin.
348. Silk Kakemono. By Kenzan. Plum blossom clad with snow. One of the most glorious works of Kenzan. This Kakemono was in the possession of High Priest of Honganji, largest Buddhist Temple, Kyoto, and is the Kenzan of wide reputation. Seal, Kenzan.
349. Six Fold Gold Screen, by Nomura Sotatsu. After earnest study in Kano and Tosa Schools, Sotatsu in early part of Kwan-ei (1630), completely throws off the tyranny which has tended to narrow the limits of painting, and asserts himself as leader in a broader and more original style of painting. The world knows Korin, but who can be ignorant of the great master, Sotatsu, to whom his glory is due.

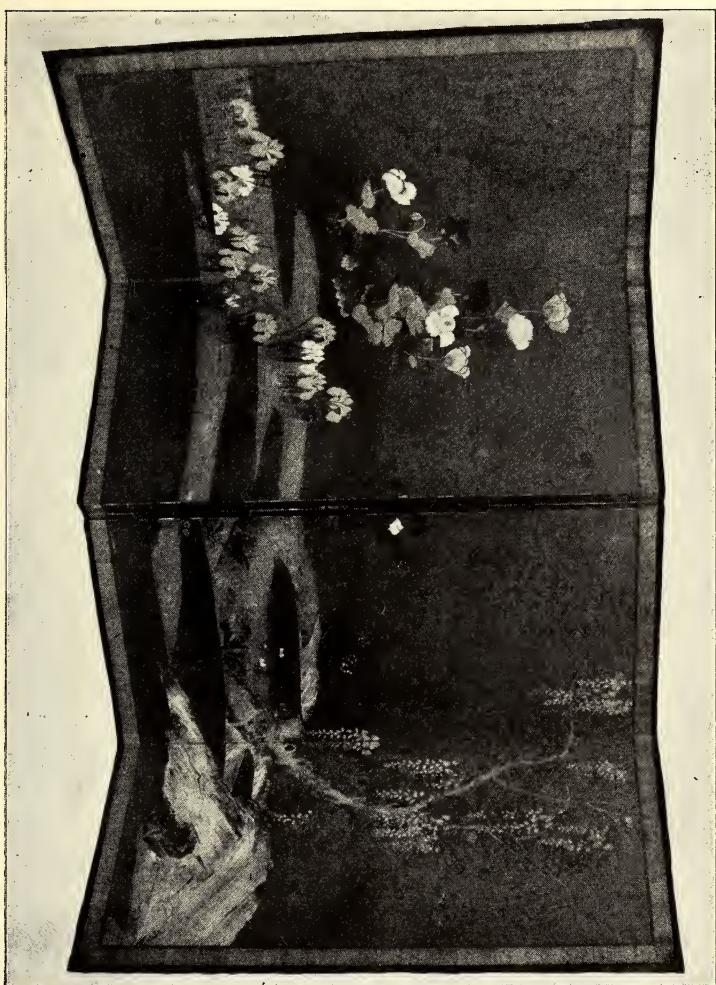
This screen, preserved for the last two centuries and a half, is a truly splendid work of Sotatsu, about

1635. What a noble painter of flowers! Sweet iris, brilliant poppies, and the willow supporting Wistaria in blossom. The rock at the foot of the willow has still the mingled air of Kano and Tosa. Superb gold background. Height, 53 1-2 inches; width, 24 1-2 inches. (See illustration.)

350. Sotatsu Screen. Mate to No. 349. The style of morning glory often seen in Kenzan's work is here in interesting comparison. Korin and Kenzan were very affectionate brothers and sometimes worked together. The younger brother must have worshipped Sotatsu as much as did his elder brother.

Massive groups of red chrysanthemums and graceful native calamus are expressions of his faithful delineation of nature. It would require weeks of study to exhaust its interest and value. (See Illustration.)

351. Awata Sake Bottle. Gourd shape; bamboo and plum painted with enamel. Rare specimen. Date, 1760. Teakwood stand. Height, 9 inches.
352. Yatsushiro Bottle. Pine tree and stork painted under the glaze. Date, 1830. Teakwood stand. Height, 9 inches.
353. Utamaro. Festival of Asakusa. Large. Color Print. Date about 1780.
354. Shunsho. Girl dreaming. Small Color Print. Early work of Shunsho. About 1780.
355. Toshinobu. Actor. Hand-colored Print. Well preserved clear Print. Use of a lacquered black is dropped and touched with pink and yellow. Fluff of beautiful detail in drapery. About 1735.
356. Magosaburo. Girl standing in front of house. Hand-colored Print. This print exhibits the early Nishimura style at its best. Rich lacquer black used with strong red and yellow. About 1730.
357. Yeishi. Girls at music in pleasure boat. Great master of Kwansei Period, about 1790.



NO. 349. — Showing four of the six panels.





NO. 350. — Showing four of the six panels







358. Moronobu. Princess and two Warriors on Boat. Hand-colored Print. Very important work showing his style of famous period Genroku, 1688.
359. Kiyonaga. Group of Girls on porch. Large Colored Prints. Kiyonaga is regarded by some as the central and culminating figure of Ukiyoe Masters. His in-born genius in coloring and composition is indeed wonderful. Observe how masterly he used the lavender dress tied with red obi; the gauziness of the black drapery revealing the tint of rose is unequalled by any one. The delicate pose of figure against charming landscape at the back is marked originality of Kiyonaga. Date about 1780.
360. Kiyonaga. Boy at writing with two attendants. Large Colored Print. This rare and original early Print is one of Kiyonaga's great creations. The color has been much toned down, but still possesses unfathomable charm. Date about 1774.
361. Masanobu. Large Ink Print. Imp and Warriors on Bridge. Masanobu is greatest pupil of Moronobu, and this is one of the most powerful of his works in existence. Date about 1704.
362. Awata Sake Bottle. Pine, plum, and bamboo painted in enamel. Border on the top is richly decorated with green. Date, 1780. Teakwood stand. Height, 9 1-2 inches.
363. Takatori Water Jar. Imogata shape, covered with mottled glaze of black and greenish yellow. Made at Takatori, Chikuzen. Date about 1800. Height, 6 1-3 inches.
364. Metal War Hat. Flat, shield shape. Sacred phoenix in repoussé, lined with gold lacquer. Date, 1700.
365. Green Banko Bowl. By 2d Yusetsu. Two Orchid Flowers Painted on Rich Green Ground. Mark, Banko. With teakwood stand.
366. Kyoto Bowl. By 1st Taizan. Inside is decorated with painting of the God of Happiness on a crane; the outside with pine, bamboo, and plum design. Beautiful crackle. Mark, Taizan. Teakwood stand.

367. Kiyomidzu Bottle. Decorated with bamboo in green and blue. Exquisite coarse crackle. Finest quality. Date, about 1730. Teakwood stand. Height, 8 2-3 inches.
368. Kiyonobu. Hand-colored Print. Two Actors. Remarkably clear and fresh in color. The old style of sprinkling with metal dust gives character to the prints of this day. Date, about 1737.
369. Harunobu. Colored Print. Boy Fixing Girl's Clog. Out of door feeling in winter is refreshing. Charming color of garments, with contrast of green bamboo fence, background and plum tree beyond fence against gray tinted sky. Signed, Suzuki Harunobu. Date, about 1768.
- (This most accomplished Master of Ukiyoe is a pupil of Shigenaga. His creations in printing prove him a genius of original stamp.)
370. Harunobu. Colored Proof-Print. Goddess Crossing the Sea on a Rush. This is a rare proof-print. Mass of red drapery against tinted gray sky. Here the figure fairly floats like a vision. There is no reason to doubt the genuineness of this print because of the absence of his signature, as it was often the practice in Japan to make "proofs before letters." Date, 1765.
371. Old Bronze Incense Burner. Beautiful dove wings form the cover. Date, 1800.
372. Soma Jar. Fish and maple leaves carved in relief under the glaze. Date, 1700. Teakwood stand. Height, 5 2-3 inches.
373. Large Water Kettle. By Nagoshi, Kioto; celebrated Court Bronze Maker. Quality of bronze like that of Shakudo; every detail carefully finished to perfection. Date, about 1780.
374. Old Green Bronze Kettle. Fine quality of bronze. Date, about 1820.
375. Old Bronze Kettle. Beautiful specimen of kettle hammered out of two kinds of metal and joined in the middle. Exquisite repoussé on handle. Date, 1850.

376. Old Album. Fifty proof-prints, illustrating birds and flowers by Soogaku. Cover of old brocade. Date, 1830.
377. Mitsuhiro Bronze Vase. Simple form; magnificent dark green. Teakwood stand. Height, 14 3-4 inches.
378. Awata Water Jar. Ivory glaze, decorated with New Year's ornament. Clear cut specimen. Mark, Awata. Date, 1800.
379. Old Bronze Hibachi. Dragon blood metal treated on surface like glaze on pottery. Date, about 1760. Diameter, 10 3-4 inches. Height, 7 1-4 inches.
380. Old Kyoto Jar. Green glaze covers the upper edge of ivory white body. Beautiful crackle. Made by Kin Kozan. Date, 1820. Height, 7 1-2 inches.
381. Utamaro. Large colored Print. Three Girls Wading in Stream. One of Utamaro's glorious designs known as series of Mutamagawa. Date, about 1785.
382. Moronobu. Ink Print. Two Warriors Fighting on Bridge. It is fortunate this most interesting example was preserved to this day. It has a date on the margin: "May, 4th year of Genroku" (1691).
383. Kioden Masanobu. Small colored Print. Three Women and Child on Edge of Lotus Pond.  
Great pupil of Shigemasa, and rival of Kiyonaga. This print is decidedly rare. Date, about 1783.
384. Hiroshige. Triptych. Whirlpools of Naruto. These well-preserved Prints are the most famous designs ever done by Hiroshige, Japan's foremost landscape Printer. The delicate landscape effects and the faithful portrayal of the strong tide was realized by the Collector on the occasion of his visit to the scene two years ago. Date, about 1828.
385. Old Bronze Dish. A frog on the edge of the dish. Used for flowers. Date, about 1850. Diameter, 8 inches.

386. Kinkozan Jar. Tiger skin glaze. Height, 7 3-4 inches.
387. Old Basket with handle. Made by Bokusai, Osaka.
388. Mitsuhiro Bronze Vase. Slender in form; toad on the neck. Teakwood stand. Height, 10 1-2 inches.
389. Palace Genji Lamp. "Genji" is the name of a noble family who actually ruled Japan about 1000 A. D. The immense globe of the lamp is characteristic of those days. Painted by Ranseki, a graduate of Kioto Art School. Height, 3 feet, 4 inches.
390. Koriusai, Greatest follower of Harunobu. Colored Print. Lovers Dreaming together.  
The dream is evidently one of good luck; a falcon in egg plant field near Fugi Mountain. The lovers are travelling together along the road.  
This matchless Print is of the style of Anyei Period. One of the most charming of his works. Date, about 1770.
391. Moronobu. Hand-colored Print. Female figure Playing on Samisen. Style and color resemble Mataheia. Here we see the primitive stage of the Japanese Colored Print. Exceedingly rare and choice specimen. Date, 1680.
392. Moronobu. Hand-colored Print. Female Figure with Nightingale in Cage. Delicate grace of Genroku style. One of the set No. 391. Date, 1680.
393. Harunobu. Colored Print. Outdoor Life of Girls in Early Spring. Wonderful specimen of clear proof-print. Delicious emerald green makes a charming back ground. Signed, Sudzuki Harunobu. Date, 1770.
394. Kiyonaga. Colored Print. Two Ladies on Beach. This peculiarly beautiful print is one of Kiyonaga's earliest works. Date, about 1765.
395. Harunobu. Tall Colored Print. Girl Walking. This is one of the most fascinating, girlish, and flowerlike of Harunobu's designs. The soft purple with pattern of pine tree with snow has a perfect charm in contrast with the pale pink and gray blue undergarment. Date, about 1768.

396. Harunobu. Colored Print. Two Female Figures. Reading Letter. Date, 1778.
397. Kiyonaga. Colored Print. Female Figure with Attendant. This is also one of the early works of Kiyonaga. Rich, yet difficult composition. A beautiful landscape on screen in the background. Date, about 1770.
398. Mitsuhiro Bronze. Dragon curling about the vase. Strong red spot melting into green. With teakwood stand. Height, 12 1-2 inches.
399. Old Bronze Vase repaired by Mitsuhiro. He sometimes treated old bronze with his method and produced wonderful color. Height, 9 inches.
400. Old Bronze Vase, treated by Mitsuhiro. Beautiful form and superb color. Height, 6 inches.
401. Ancient Bronze Vase. In form of bamboo. About 1600. Height, 9 1-2 inches.
402. Silk Temple Tapestry. Silver dragons facing each other on dark blue ground. Length, 7 1-4 feet; width, 2 1-8 feet.
403. Silk Fukusa. Made of heaviest Shioze silk; used to cover the wedding or birthday gifts.
404. Silk Fukusa. Bush clover and golden bridge over stream of water. Lined with crêpe.
405. Ancient Chinese Tapestry. Sacred Dragon rising from sea. Mass of soft green and red form the waves against a background of imperial yellow. Date, about 1700. Size, 48 x 34 inches.
406. Small Green Fukusa. Real gold thread woven into the charming pattern.
407. Embroidered Silk. Spray of Wistaria blossoms; cockerel, hen, and brood of chickens picking at early spring weeds. Whole ground covered with solid needle-work. By Nomura, Kyoto. Size 78 x 53 inches.
408. Old Priest's Robe. Gold brocade peony design on Pompeian red.



409. Old Silk Brocade. Conventional pattern in yellow and blue. Size, 53 x 42 inches.
410. Old White Hirado Vase. Conventional wave and stork carved under the glaze. With teakwood stand. Height, 13 inches.
411. Iga Water Jar. Three shades of yellowish green glaze splashed across the surface of coarse reddish clay. Date about 1780. Height, 7 inches.
412. Imari Jardiniere. Beautiful, soft blue and white decoration. Diameter, 12 1-4 inches; depth, 8 inches.
413. Agano Vase. Bamboo green glaze over cream white ground. Made at Agano in the Province of Buzen. Date, 1860. With teakwood stand. Height, 11 1-2 inches.
414. Shidoro Bottle. Beautiful form; yellow mottled glaze. Date, 1760. Height, 8 1-2 inches.
415. Old Raku Tea Bowl. Superb imperial yellow glaze. Exceedingly rare. Made by Banzai Raku. Date, 1700. Mark, Sai.
416. Old Kishu Bottle. Gourd shape. Striking purples, yellow and blue melting into each other as in the petals of pansy flowers. Made at Otokoyama in the Province of Kii. Date, 1830. Height, 10 inches.
417. Bizen Bottle. Chrysanthemum under stripe of thin reddish glaze known as Hidasuki, Bizen. Date, 1780. With teakwood stand. Height, 7 1-4 inches.
418. Large Iron Lantern. Square, in form of house; used in temple yard. With Iron Chain. Height, 2 feet.
419. Old Seto Vase. A dash of black glaze on rich brown ground. With teakwood stand. Height, 7 inches.
420. Old Ofuke Vase. By Shuntai of Seto in the Province of Owari. Rich smooth glaze. Date, 1830. Height, 8 inches.
421. Bizen Bottle. In form of bamboo trunk. Fine early specimen. Date, 1750. Height, 10 1-2 inches.

422. Old Ramma, Framed. This is carved from one large piece of Mulberry wood. So large a carving from one piece is rarely found. The design of the perforated carving is conventional Kiri flowers. Size, 72 x 18 inches.
423. Old Weather-worn Fret Work. Part of the ancient Temple of Nara. Date about 1400.
424. Old Weather-worn Fret Work. Part of the ancient Temple of Nara.
425. Old Carved Ramma. Scenery of Shiba Temple. Size, 58 x 22 inches.
426. Shozan Jardiniere. By Okumura Shozan. Design, orchid, chrysanthemum, etc. Diameter, 11 inches; height, 8 1-2 inches.
427. Shozan Jar. By Okumura Shozan. Design, old Japanese brocade. This hard composition is well arranged and well executed in every detail. Fine example of his work. Height, 11 inches.
428. Old Seto Dish. In form of leaf; made by Shuntai about 1780. Length 13 1-2 inches.
429. Tozan Vase. By Ito Tozan, of Kioto. Decorated with white imperial chrysanthemum crests on fine crackled cream ground. With teakwood stand. Height, 12 inches.
430. Shozan Vase. Artistic Wistaria decoration in Kenzan blue. With teakwood stand. Height, 7 inches.
431. Shozan Vase. Natural iris decoration in silver, gold, and blue. With teakwood stand. Height, 11 inches.
432. Shozan Vase. Blue and white; copy of Shunzui Vase. With teakwood stand. Height, 11 inches.
433. Blue and White Arita Vase. Conventional floral design covers the whole vase. With teakwood stand. Height, 12 inches.
434. Carved Wood Tray. In form of banana leaf. Length, 32 inches.

435. Long Sword. Length of blade 25 inches. Tsuba, hilt and menuki, by Soten. Scabbard is gold lacquer inlaid with pearl.
436. Old Mulberry Wood Carving. Mate to No. 422.
437. Carved Mulberry Wood Tray. Scenery about Miyazima Temple. By Kiokko. Signed.
438. Silk Embroidery. Two doves flying about in white chrysanthemum garden inclosed by a fence. Entire space covered with needle-work. Size, 88 x 58 inches.
439. Silk Embroidery. Size, 52 x 46 inches. The black crêpe ground representing night, is covered with embroidery of iris and fire-flies. The gold thread used in the work is genuine hand-made cord. Formerly this was one of the dresses made on the occasion of the wedding of one of the Takugawa Princesses to Lord Tachibana, in Yedo, 1804.
440. Old Carved Wood Screen. Four panel screens, 16 x 53 inches each. Carving of birds and flowers with gold background ; framed with heavy black lacquered wood.

---

**Extra Sale. — Fourth Day.**

2045. Old Sword Guard. By Chikusai. Shibuchi metal ; mythological figures carved in relief. Signed. Date, 1780.
2046. Old Iron Sword Guard. By Yoshihisa Tamagawa. Dragon. 1800.
2047. Old Iron Sword Guard. By Kanaiye. Landscape. Signed, Yamashiro Fushimi Kanaiye. Date, 1600.
2048. Black Shakdo Sword Guard. Two Chinese figures, with dog in relief ; reverse side, waterfall. 1800.
2049. Old Sword Guard. Gourd vines, inlaid with gold and silver. Korin style. 1700.

2050. Old Iron Sword Guard. By Kanaiye. Little boat near shore, birds flying above ; reverse side is mountain in moonlight. Most important in this sword guard collection. Date, 1580. Signed, Yamashiro Fushimi Kanaiye.
2051. Old Iron Sword Guard. By Kinai. Autumnal flowers with grasshoppers, perforated iron work, gold inlaid. Fine specimen. Signed, Yeizen Naiki. 1700.
2052. Ritsuwo Wooden Box. Figure of Hotu on cow, inlaid in metal and mother of pearl. Made by Ogawa Ritsuwo, about 1750.

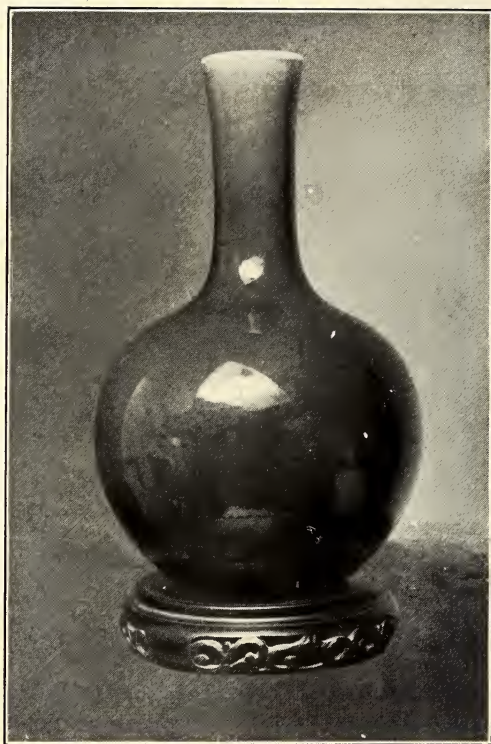
### Fifth Day's Sale.

---

441. Toyoraku Vase. Rich mottled glaze of red and black. With teakwood stand. Height, 9 inches.
442. Nabeshima Porcelain Bottle. Decoration, chrysanthemums and other flowers painted in blue under the glaze. Fine white clay. Rare old specimen. Date, 1750. With teakwood stand. Height, 10 inches.
443. Shozan Vase; by Okumura Shozan, famous Kioto Potter. Blue and black glaze with summer chrysanthemums. Height, 11 inches.
444. Shozan Vase. Decoration, Kiyomidzu Tea House painted in India ink. Signed, Shozan. With teakwood stand. Height, 11 inches.
445. Old Ofuke Vase. Thin brown glaze; rare specimen of Ofuke. Date, 1800. With teakwood stand. Height, 5 1-2 inches.
446. Shozan Bottle. One of the finest faience of Okumura. In this he surpasses Satsuma. With teakwood stand. Height, 10 1-2 inches.
447. Shozan Bottle. This is Shozan's favorite pattern, and he asserts that it is the hardest and most expensive design. A mass of peonies in silver, gold, purple, dull red and Kenzan blue. With teakwood stand. Height, 10 1-2 inches.
448. Group of Mice. Unglazed Porcelain. By Hansuke of Yokkaichi in the Province of Ise. Whole clay is carved out. Height, 5 inches.
449. Large Hawthorn Ginger Jar, with cover. Wonderful deep, uniform blue, so rarely matched with cover. Yang-cheng Period (1793). With teakwood stand. Height, 13 inches.







NO. 451.

450. Silk Embroidery. Golden dragon and Sacred Kirin with peony and clouds. This skilfully wrought design is taken from one of the banners of Gion Temple, which are carried about through the streets of Kioto twice during the year. The gray white color of the animal in contrast to the rich ground and golden dragon are the special features in this splendid needle picture. Border of old Donsu Silk. Size, 9 feet 2 inches x 6 feet.

451. Chinese Vase. Precious Sang-de-boeuf of Kang-hsi Period (1662). This has been one of the treasures of the famous Samurai of Saga in the Province of Hizen, who, after the Imperial Restoration, 1867, moved to Kioto, where he was obliged to dispose of his collection.

It is interesting to remind the connoisseur of the fact that Nagasaki had been the only port open to foreign trade for the past three centuries, and was mostly monopolized by Dutch and Chinese traders. Rare specimens of Chinese Fine Arts were often brought across the water, and this vase was among those early importations from China, much sought after by Daimyos of Kiushu. Indeed this is one of the most attractive Chinese objects in the collection. With teakwood stand. Height, 9 3-4 inches.

452. Old Yatsushiro Hanging Vase. Melon shape, clear cut white stripes coming half way down the vase. Beautiful blue gray. Made at Matsushiro, Hizen, about 1780; has oldest mark. Mark, "Gen" in double ring. Height, 7 inches.

453. Old Yatsushiro Incense Burner. Graceful form of Koro with beautiful curved ears. Clear white peony inlaid on clay. Cover perforated in conventional pattern. With teakwood stand. Height, 5 1-2 inches.

454. Ancient Square Imari Bottle. Conventional designs in numerous red, green, and purple squares cover sides of bottle. The last color is very rare in Imari and is found on old pieces only. This unfortunately has slight original furnace cracks, but possesses great value as rarest specimen of Genroku Period (1660). Height, 11 inches.

455. Powdered Blue Bowl. Egg shell ; exquisite Temmoku shape and charming blue of Hsuan-ti Period (1426).  
We have seen powdered blue in form of vases, but very seldom in bowl of so exceedingly rare and bewitching form. Indeed powdered blue of such perfection is a lost art in China, and eminent potters like Seifu and Makuzu of Japan do not deny its being a lost art there also. Mark, Tai-ming Hsuan-Ti. Nen Sei. With bronze stand. Diameter, 9 1-2 inches ; height, 2 7-8 inches.
456. Yeishi. Triptych. Court Ladies in Palace. At the beginning of Kwan Sei (1786), closely following Kiyonaga, this great master appeared with new and original coloring. He was a great rival of Utamaro and Toyokuni. This is one of his magnificent early prints. The perfect tone of soft green peculiarly his own is well represented in this print. Date about 1787.
457. Yeizan. Two Girls carrying Samisen Box. Date about 1830.
458. Utamaro. Girl and Attendant. Date about 1780.
459. Utamaro. Girls at Osaka Fair, in Front of Gate. Gay life of Yedo is well illustrated in detail. How striking the black winter head-coverings in the midst of the delicate coloring ! The huge giant behind the net stands out in pleasing contrast to the figures below. Date about 1780.
460. Old Kiyomizu Teapot. Beautifully decorated with conventional design. The design alone would mean five days' work for a modern potter. Rare specimen. Date, 1780.
461. Old Shigaraki Tea Jar. Rich dark blue and dove colored glaze ; corrugated sides. This was one of seven huge tea jars in the shop of a famous wholesale tea dealer in Kioto. It is perhaps the oldest large tea jar made at Nagano Village of Shigaraki, about 1700. The Collector must now confess that it was a long time before he could persuade them to give it up. Height, 3 feet.



NO. 455.



462. Iron Breast-Plate. By Ki Miyochin. Design, dragon and cloud. The head of the dragon stands out in the most pronounced style of repoussé. Signed, Miyochin Osuminokami Kino Munesuke. Date, 1700.

## NOTE.

Banko Ware was first made by Numanami Gozayemon, a famous merchant in the Province of Ise, about 1740. Later he went to Koume Village, near Yedo, and made pottery by the order of Shogun. His early work bears no stamp, but from about 1760 he used stamp "Banko" (Forever), in rather broad type. Closely following Gozayemon, one of his relatives started a kiln near Tsu, Ise (about 1780), and produced splendid pieces, using the mark "Anto" (Bake East easily). Unfortunately the meaning was ridiculously rejected by Shogun, who was then called "Eastern Master," and they were obliged to close the kiln. This ware lasted only a few years. Later, in 1810, Takegawa Chikusai, receiving the remnant of the clay from Anto kiln, made from it pottery at the village of Isawa near Yokkaichi, Ise, and used stamp "Isawa."

Still later, 1830, Mori Yusetsu by his skill in copying old Chinese, added great interest to this ware.

The ware made prior to 1830 is known as "Old Banko," and genuine pieces are very rare. The collection below was purchased from Mr. Kawamura, of Ise, who is the present owner of Banko Kiln. Every piece is guaranteed.

463. Sake Bottle. Made by Gozayemon. Beautifully modulated shades of green glaze. Two round panels decorated with peacock and peony blossoms. Finest specimen. Date, 1760. Small mark, "Banko." Height, 10 inches; with teakwood stand.
464. Bowl; by Gozayemon. Divided in centre by partition. Decorated with landscape in three round panels. Date, 1760. Mark, Banko. With teakwood stand. Diameter, 8 inches. Height, 4 inches.
465. Dish with Handle; by Gozayemon. Figure of Hotei carved in centre. Glorious green and charming celadon glaze. Mark, Banko. Date, 1770. Diameter, 8 inches.



466. Sake Bottle ; by Gozayemon. . White floral decoration, under clay colored glaze. The decoration looks exactly like Yatsushiro, and would be a great puzzle in case of absence of the stamp. Mark, Banko. Height, 7 1-2 inches.
467. Tall Cake Bowl. Gozayemon's earliest specimen. Has great similarity to Chinese Akaye. Beautiful iridescence. Mark, Banko. Height, 3 1-2 inches.
468. Sake Bottle. In form of melon, covered with exquisite green glaze. Very old specimen of Gozayemon's work. Date, 1730. Furnace mark. Height, 8 1-3 inches.
- 468 $\frac{1}{2}$ . Hexagonal Vase. Green glaze with striking iridescence ; glorious specimen. Made at Anto, Ise. Date, 1770. Height, 5 inches.
469. Round Dish. Made at Anto. Chrysanthemum decoration on unglazed body. Mark, Anto. Diameter, 7 1-2 inches.
470. Sake Bottle. Hexagonal in shape. Made at Isawa, Ise. Conventional floral pattern carved under pale green glaze. Mate to one at Boston Museum of Fine Arts (Professor Morse's collection.) Mark, Isawa. Height, 8 1-2 inches.
471. Pottery Kettle. Made by Yusetzu. Seven Gods and Goddesses of Happiness, painted in red. Mark, Banko, Senshu Fuyeki.
472. Square Bowl. By Yusetzu. Peony decoration inside ; white, creamy glaze. Mark, Banko.
473. Cake Dish. Celadon green ; made by Gozayemon, about 1760.
474. Tea Jar with Cover. This rare specimen is one of two important pieces in the collection, No. 463, and an early piece of work by Gozayemon, without mark. Painted Chinese landscape in many colored enamels. With teakwood stand. Height, 5 inches.
475. Bronze Vase. Flaring at the top ; rings on both sides. Beautiful russet brown. Mark, Yosei. With teakwood stand. Height, 11 1-2 inches.

476. Bronze Vase. By Takusai, celebrated bronze maker in the Province of Yechigo. Dragon tossing in angry waves forms the base of the vase. Mark, Komin Takusai. Height, 9 1-4 inches. Date, 1800.
477. Bronze Dish. By Mitsuhiro. Copy of Chinese; shallow dish of beautiful form and color. Diameter, 7 inches.
478. Red Bronze Vase. In form of mallet; rich, glowing color. Made by Masaharu. Signed and sealed. Date, 1780. With teakwood stand. Height, 12 inches.
479. Bronze Vase. Designed for single flower. Graceful, slender shape. Beautiful reddish blur like the last faint glow of the twilight sky. Date, 1830. With teakwood stand. Height, 12 inches.
480. Chinese Porcelain Vase. Chia-ching Period (1796). Combination of purple, blue, and red glaze. Brilliant specimen. With teakwood stand. Height, 14 inches.
481. Chinese Sang-de-boeuf Vase. Kang-hsi Period (1736). Beautiful crushed strawberry color. With teakwood stand. Height, 8 1-4 inches.
482. Porcelain Vase. Made by Koji of Kamakura in the Province of Sagami. Dark stripes on deep purple glaze. Height, 9 1-4 inches.
483. Porcelain Jar. Made by Gosuke Kato. Deep Venetian blue. Height, 6 1-2 inches.
484. Old Kishiu Vase. Made at Otokoyama in Province of Kii. Gorgeous purple, with here and there splashes of beautiful blue. Flying bats in relief under the glaze. Height, 22 inches.
485. White Satsuma Vase. Square shape, with Chinese poetry carved in relief under the glaze. Made by Chinjukan of Satsuma. Signed. Height, 14 inches.
486. Silk Embroidery. Golden dragon rising from sea. Conventional cloud on pink ground, and crest of Yonezawa embroidered in gold thread in centre. Size, 46 x 67 inches.

487. Old Silk embroidery. Weeping Cherry in Blossom. Background is solid needlework in soft yellowish green. Border, old gold brocade. Size, 76 x 56 inches.

IMPORTANT CABINET OBJECTS.

488. Old Bronze Incense Burner. With teakwood stand.  
489. Old Bronze Vase.  
490. Old Bronze Incense Burner. With teakwood stand.  
491. Old Iron Damacine Dish. With teakwood stand.  
492. Kiyomizu Incense Burner with solid silver, perforated cover. Date, 1760.  
493. Small Chinese Vase. Sang-de-boeuf. With teakwood stand.  
494. Tea Jar ; by Kenya.  
495. Wine Cup. Brocade decoration. By Yeiraku.  
496. Old Seto Incense Box in form of fruit of Egg Plant.  
497. Group of Cats. By Hansuke.  
498. Old Satsuma Teapot.  
499. Old Awata Teapot.  
500. Glorious Little Hagi Bottle. With teakwood stand.  
501. Dish with Handle. By Yeiraku Zengoro. Date, 1820.  
502. Tortoise Shell Satsuma Cup.  
503. Cup Stand. By Taizan, Awata with Imperial Chrysanthemum Crest.  
504. Porcelain Sake Cup.  
505. Old Kutani Bottle. Exquisite dark blue.  
506. Blue and White Cup. By Kitei, Kioto.  
507. Small Vase. By Nimpei Awaji. Rare Piece.  
508. Setokusuri Satsuma Bottle.  
509. Tea Cup. Early work of Seifu.

510. Cup Stand. By Hozan.
511. Mishima Satsuma Incense Burner.
512. Old Kutani Bowl. Brocade Decoration.
513. Old Teapot. Mark, Awataguchi.
514. Raku Incense Box. Mark, Juraku.
515. Old Satsuma Incense Burner.
- 
516. Palace Lantern. Black lacquer frame ; bamboo, painted by Ranseki. Height, 4 1-2 inches.
517. Silk Japanese Kimono. Yuzen Crêpe, lined with red Momi silk.
518. Red Crêpe Obi.
519. Old Silk Crêpe Kimono. Date, 1820.
520. Satin Embroidered Kimono. Sacred Phœnix elaborately wrought. Lined throughout with red Kabe Crêpe.
521. Old Silk Coat, with crest of Kudo. Worn by cup bearer in olden time.
522. Red Brocade Priest's Robe. Made of finest and heaviest gold brocade and lined with dark purple silk. Size 81 x 41 inches.
523. White Satsuma Jar. Made by Chinju Kan, Satsuma. Delicately carved band of chrysanthemums on neck of vase. Diameter, 8 1-2 inches ; height, 11 inches.
524. Shozan Vase. Peony flower in Kenzan blue. Height, 11 inches.
525. Shozan Jar. Satsuma, Raku, Oribe, and Awata Wares are faithfully produced in the design of plum blossoms. Height, 11 1-2 inches.
526. Shozan Vase. Brocade pattern. Height, 11 inches.
527. Shozan Jar. Decoration, Cockscomb blossom on beautiful gray ground. Height, 10 inches.



528. Bronze Incense Burner. Stork standing on cover forms the handle. Beautifully wrought carp and turtle swimming in water. Height, 15 inches.
529. Old Arita Jar, with cover. Classic design of Chinese landscape painted under the glaze. Height, 10 inches.
530. Rabbit, by 2nd Dohachi, Kioto; with original box. Date about 1820.
531. Takatori Bottle. Cream and blue mottled glaze. Fine and rare specimen. Mark "Ka." Height, 10 1-4 inches.
532. Old Bronze Lantern. Square, with iron chain. Used in Japan on piazza facing garden. Date about 1780.
533. Old Kioto Bowl. God of Wealth painted under glaze. Inscription says: "The painting is copied from that of Tosa Mitsuoki, celebrated court painter." Mate to one at Boston Museum of Fine Arts. (Prof. Morse's collection.) Made by Dozan.
534. Old Owari Bowl. Made at Nagoya, Owari. Mark, Hagiya. Date, 1830.
535. Old Hagi Bowl. Crest of Takugawa painted in gold. Made at Matsumoto in the Province of Nagato. Since this ware was manufactured after methods of Korean kiln, it resembles Korean pottery. Fine Specimen. Date about 1680.
536. Ancient Iron Hibachi. With band of beautifully wrought pine pattern. Date, 1500. Diameter, 8 3-8 inches; depth, 7 1-4 inches.
537. Ancient Bronze Vase.
538. Round Frame with Mask. Mask of Okina (Man of Long Life).
539. Shozan Water Jar. Decoration, native Japanese iris in Kenzan blue.
540. Silk Embroidered Table cover. 35 x 35 inches.
541. Carved Wood Lotus Tray. Whole thing carved out of one piece of native Kanote oak.

- 
542. Old Satin Obi. Worn about 1800. 2 x 14 feet.
543. Old Donsu Silk Obi. Used about 1800. Size, 2 x 14 feet.
544. Old Silk Brocade Obi. Used about 1850. Size, 2 x 13 feet.
545. Pottery Jug. Dark green glaze. Corrugated wheel mark on body of jug. Made by Horaku. Date, 1780. Height, 9 1-4 inches.
546. Silk Embroidery. Part of the wedding outfit of Princess Tokugawa. (See No. 439, page 50.)
547. Carved Mulberry Wood Tray. Miyajima Temple and surrounding scenery. Size 16 x 24 inches.
548. Twofold Screen by Hoitsu. He was formerly Priest of West Honganji, Kioto. He had profound admiration for Korin's work, and made himself famous by his fine conception of Korin's style. 1830. One panel is a painting of gourd vines in the moonlight; the other, snake gourd vines and sunrise. Inner mat is genuine old silver paper bordered with brocade. It is a typical Japanese screen such as is used in their houses. It is interesting to observe how different this screen is from those made for the American market. Size, 2 1-2 feet wide x 5 feet high.
549. Twofold Screen. Design, bamboo and sparrows in India ink. By Ranseki. Width, 2 1-2 feet; height, 5 feet.
550. Large, Old Bronze Kettle. Date about 1700.



**Extra Sale. — Fifth Day.**

2046. Huge Temple Gong, on carved wood lacquered stand. Maximum circumference is 83 inches, and diameter 28 inches. This was originally made for the Temple of Komiyojin, Kioto, 2nd year. Genroku (1689).  
This wonderful gong possesses a beautiful mellow tone. Vibration does not cease for fully five minutes. Stand is carved from Hinoki pine and lacquered in red, but time that has worn away part of the lacquer has given a new beauty to that which remains. Height, 54 inches including stand.
2047. Old Gold Lacquer Box. Decoration, Crests of Lord Asano, and millet blossoms and leaves in gold lacquer. Repoussé brass ornaments on several places. Heavy red silk cord and tassel. Height, 17 inches.
2048. Old Bronze Basket in Repoussé, with handle.
2049. Kuril Lacquer Box. Carved out of Native Kuril Mulberry Wood and lacquered.

**TEN IMPORTANT OLD TEA JARS.**

2050. Seto Kusuri Satsuma. Rich black glaze. Hard reddish clay. With carved ivory box. Date, 1650.
2051. Takatori Tea Jar. Rich mottled glaze of reddish brown. With three original brocade bags, one for every day, and other two are for winter and summer. Date, 1680.
2052. Flat Seto Tea Jar. Made by 1st Toshiro. Splash of amber brown glaze. Date, 1250.
2053. Zeze Tea Jar. Black glaze over brown ground. In original black lacquer box. 1780.
2054. Iga Tea Jar. Tall irregular form. Rich brown glaze with reddish shade of coarse clay. In original black lacquer box. 1650.
2055. Seto Kinkwazan Tea Jar. Made by 2nd Toshiro, about 1270. Glorious rich black glaze.

2056. Takatori Tea Jar. In form of teapot. Brilliant chestnut brown glaze, has three original bags. Same as No. 2051.
2057. Seto Tea Jar. Rich golden brown glaze. 1325.
2058. Takatori Tea Jar. Brilliant black glaze over brown ground. 1700.
2059. Satsuma Tea Jar. Dull metallic glaze, glorious jar made at Chosa. 1650.
- 
2060. Old Bronze Jar. Shape, spheroid. Rich green bronze. This simple yet truly magnificent bronze is the best ever possessed by the collector, and in quality, color, and form is second to none. When struck produces a soft mellow tone, like that of Ancient temple gong, which proves it a fine quality of bronze. Height, 10 inches ; maximum diameter, 15 1-2 inches. Date about 1600. With teakwood stand.
2061. Old Bronze Vase. Flaring into broad diamond shape top. Conventional design on body and neck of the vase. Height, 14 inches. Date, 1700. With teakwood stand.
2062. Covered Pottery Dish. Shape of shell with lacquered cover used for serving food. Made by Sanko in the Province of Mino. Mark, Sanko.
2063. Old Bronze Vase. Shape, hexagonal. Conventional design on the body. Height, 11 inches. Date, 1780.
2064. Mitsuhiro Bronze. Tall and slender gradually flaring at the top. Wonderful green color. Height, 13 1-2 inches.
2065. Old Chinese Bronze Vase. Shape, round, narrow in neck. Fine specimen of Hsuang-Te (1426). Height, 8 inches.
2066. Old Bronze Vase. Shape of basket. Wonderful work of wrought bronze. Made during Genroku Period. Date about 1690. Height, 11 inches.

### Sixth Day's Sale.

---

551. Porcelain Vase. Band of Cherry Blossoms and Wistaria in blue, runs diagonally about the vase. Made by Masukichi, in Province of Owari. With teakwood stand. Height, 12 inches.
552. Old Takatori Bowl, in form of boat. Mark, "Taka." Date about 1850.
553. Bronze Okimono. Mother hen with brood of chickens. Green bronze, cast by Mitsuhiro, celebrated bronze maker. With teakwood stand. Height, 5 inches.
554. Old Bronze Vase. Square, flaring at top. Date about 1730. Height, 9 inches.
555. Shudo Bronze Jar. Entire work in repoussé. By Nakagawa Joyeki, Kioto. Date about 1820.
556. Old Idzumo Vase. Square, growing gradually narrow toward the top. Decoration, bamboo in green enamel on rich black ground thickly glazed; coarse reddish clay. Date about 1820. Mark, Zen in hexagonal ring. Height, 13 inches.

#### NOTE.

Watanabe Seitei is about fifty-three years old, and lives in Asakusa, Tokio. He first studied painting under the late Kikuchi Yosai, a celebrated modern painter of Osaka. Later he produced his own style of such originality and coloring that he at once made himself famous the world over.

Famous enamel work of Namikawa and Suzuki and celebrated silk brocades of Nishimura and Takashimaya owe their reputation to Seitei's design. Now he paints very seldom and already Tokio market is full of imitations of his work. The collector being well acquainted with Seitei will vouch that these are the best works of Seitei during the last two years. Specially painted for the collection.

557. Painting on Silk. By Seitei. Cockerel, hen, and chicken. Framed in old burnt Japanese cedar frame. (See illustration.)

NO. 557.











558. Painting on Torinoko Paper. By Seitei. Native Japanese Stork resting. This is the artist's favorite paper to paint on.
559. Painting on Torinoko Paper. By Seitei. Carp swimming along water grass.
560. Painting on Torinoko Paper. By Seitei. Native Japanese Robin.
561. Painting on Torinoko Paper. By Seitei. Daisy and Grasshopper.
562. Painting on Silk Kakemono. By Seitei. Autumnal flowers in Moonlight.
563. Painting on Torinoko Paper. By Seitei. Three Goldfish.
564. Painting on Torinoko Paper. By Seitei. Two carp swimming in pond overhung by Wistaria in blossom.
565. Hanging Silk Embroidery. Needle-painting of Nikko. Sacred Red Lacquer Bridge and Rapids. Nikko has a double glory—glory of Nature and glory of Art. Those who have ever visited Nikko will never forget its grand mountains and magnificent temples, and particularly the noble sight as one stands at the centre of the Common Bridge (so called to distinguish it from the Lacquer Bridge).

This embroidery with all its wealth of color, is a clear, well-defined picture of the Nikko Bridge and its surroundings as one looks at it from the point just mentioned. No colors so charming as the mass of deep green Cryptomaria which cover Nikko mountains and the peculiar blue water of the rapids. It is incredible, such a wonderful rendering of light and shade, not the work of the brush, but of the needle in the hands of master craftsmen. It is the most skilful piece of work ever accomplished by Nomura after the labor of more than five months.

The border is valuable old brocade with gold embroidered crests of Tokugawa. Lining, white Hoshio silk.

(This is the famous bridge over which Gen. Grant refused to cross.) Size, 66 x 79 inches. Metal repoussé mountings.

566. Old Karatsu Jar. Splash of rich bluish green glaze on hard reddish clay. Height, 7 inches.
567. Tall Sake Bottle. Soft ivory-like glaze with fine crackle. Figure of Shoji dancing along wine jar painted under the glaze. Date about 1780. Height, 16 inches.
568. Old Bronze Medicine Box. Date, 1750.
569. Green Bronze. Cylindrical in shape, wonderful color. Height, 9 1-2 inches.

## NOTE.

The quality of genuine decorated Satsuma is hard white clay with hard, marble-like, crackled glaze, and is distinguished by its dull red, green, and blue enamels with thick and rather careless gold tracings.

Best early specimens were made about Kwansei Period (1789-1800), therefore the term, Old Decorated Satsuma, means, Satsuma at least over eighty years old.

570. Satsuma Tea Bowl. Decorated with seven autumnal flowers, delicately painted in dull red, green, and blue enamels. Hard marble-like crackle of finest quality. Made at Satsuma, about 1790. Best decorated Old Satsuma in the collection.
571. Small Satsuma Teapot. Decorated with dull red, green, blue, and yellow enamels. Genuine Old Decorated Satsuma. Date, 1820.
572. Satsuma Sake Bottle. Decoration, Lions and peony flowers. Fine, hard crackle. Date, 1800. With teakwood stand. Height, 6 inches.
573. Satsuma Teapot. Painted with plum blossoms in red enamel. Genuine old piece. Date, 1820.
574. White Satsuma Tea Bowl. Shallow "temmoku" form. Hard, marble-like quality with crackle. With silver rim. Genuine old specimen. Date, 1700. With teakwood stand.
575. White Satsuma Tea Bowl. Hard, smooth crackle. Unusual specimen of Satsuma. Genuine Old Satsuma. Date, 1650. With teakwood stand.

576. Mishima Satsuma Jar. Uniform, creamy glaze, with Mishima pattern; fine, hard crackle. Rare and large specimen of Mishima. Date, 1820. Diameter, 9 3-4 inches; height, 10 1-2 inches. With teakwood stand.
577. Silk Embroidered Hanging. Group of Native Stork in Flight. Brown ground covered with needlework. Border of Donsu Silk Brocade. Size 4 feet 10 inches x 7 feet.

## NOTE.

Nonomura Ninsei. Among all Japanese Ceramic Artists there is none who had so many imitators as Ninsei, since his work was greatly admired and sought after by collectors. But the expert can distinguish his works by the stamped signature "Ninsei," the peculiarly delicate crackle, the unusual form and technical skill which it is impossible to imitate. He built his kiln at Sannenzaka, near Kiomizu, Kioto, and made ware during Kwan-ei Period (1624-1643). We regard Koyetsu, Kenzan, and Ninsei as the monarch potters.

578. Ninsei Incense Burner. Sleeping Cats. A pussy on back of large cat forms handle to cover. White spots on cat are delicately touched with blue. It will take weeks of study to appreciate its wealth. Travellers have seen famous Jingoro's Sleeping Cat at Nikko, but have not seen this Ninsei's Cat. Ecu glaze of fine texture; genuine work of Ninsei. Mark, Ninsei. Date, about 1630.
579. Ninsei Sake Bottle. Plain, pale opaque glaze over wonderful fine crackle. Genuine work of Ninsei. Mark, Ninsei. Date, about 1630. Height, 6 1-2 inches.
580. Ninsei Sake Bottle. Round bottle with flattened sides. Decorated with various colored enamels. Genuine work of Ninsei. No mark. Date, about 1750. Height, 7 inches.
581. Pair of Ninsei Incense Boxes. In gold lacquer case with metal ornaments of Imperial Crest of Chrysanthemum. This pair of Incense Boxes was made by Ninsei for the Palace of Omuro with a clay from Omuro Hill. An inimitable technical skill is dis-



- played in these tiny objects that is indeed a revelation. These famous specimens of Ceramic Art have been kept and handled with such care that they look astonishingly new. Genuine work of Ninsei. Date, 1640.
582. Teapot by Makuzu Kozan. A deep blue and white decoration, copy of Chinese. Height, 8 inches.
583. Cup by Makuzu Kozan. Gold design on magnificent coral red. Signed, Dai Nippon Makuzu.
584. Dish with Handle. Made by father of Makuzu Kozan at Makuzu Plain of Kioto. Cream and black glaze representing day and night. Mark, Makuzu. Date, 1830.
585. White Goose. Made by First Makuzu. Mark, Makuzu.
586. Sanuki Vase. Hexagonal shape. Six sides have perforated floral design in various colored enamels. Two dragons form the handles on either side of neck. This is the largest and finest specimen ever made at Takamatsu in Province of Sanuki. Mark, Takamatsu. Height, 28 inches.
587. Kawamura Incense Burner. Decoration, white crested waves on gray ground. Rabbit forms handle to cover. Height, 8 1-2 inches.
588. Old Green Bronze Jar. Conventional figure of lion resting on top of cover. Faucet on body of jar formed by dragon's head. It is a rare and magnificent specimen of old green bronze. Height, 22 inches.
589. Flat Banko Bottle. Crab resting on top. Beautiful pale green glaze. Used in pleasure boat.

#### NOTE.

When Toshiro, after his long study of pottery in China, returned to Owari, his native Province, in the year 1225, he made an earnest search for suitable clay. For that which he had brought with him from China was limited. He was not successful in finding any until one day when

he came to a mountain near Seto, where he became so weary and exhausted that he fell asleep, and dreamed an old woman appeared and produced a handful of clay from her bosom, telling him that was what he wanted, and where he could find more. Upon awaking, he followed her directions and found abundant material.

He settled at Seto in 1227, and some of his work bears the inscription, "Sobokai," which means "Grandmother's bosom."

590. Large Seto Jar. Faint splashes of amber brown glaze on hard clay. Inscription on bottom, "Sobokai." Made by First Toshiro, at Seto, in the Province of Owari. This fine jar was unearthed at Gifu after the great earthquake, 1891. Date, about 1230. Height, 14 1-2 inches.
591. Seto Shunkozan Vase. Black glaze with splashes of rich amber. Made by Shunkozan, Seto. Date, 1500. Height, 8 3-4 inches.
592. Old Lotus Flowers with Bronze Vase. Used in front of Altar. Height, 40 inches.
593. Silk Embroidered Hanging. This magnificent piece of needle-work, 114 x 82 inches, is another great work of Nomura, Kioto. The original pattern is on a banner in Gion Temple, which is carried along the street in a Festival Procession twice each year.
594. Lacquer Jewelry Chest. Decoration, two branches of persimmon in "Togidashi" gold. Made by Kajikawa. 1780.
595. Kioto, Covered Box. By First Hozan. Graceful in form. Date, 1810. Height, 4 1-2 inches.
596. Old Karatsu Bottle, known as Ye Karatsu, or decorated Karatsu. Fine, uniform crackle; Chinese landscape painted under the glaze. Rare specimen. Date, 1750. Height, 8 1-2 inches.
597. Large Seto Jar. Brilliant bluish-black glaze, splashed with metallic brown. One of the largest and most perfect specimens of Seto. Date, 1750. Height, 15 inches.



598. Yellow Seto Vase. Square at base growing narrow toward centre and flaring again at top. Corrugated sides. Two bands about the centre of vase. Fine specimen. Date, 1700. Height, 10 1-2 inches.
599. Two Figures Wrestling. Wood Carving. One is the God of Energy, the other the Imp. The latter nearly lifts the God off his feet but his strength is exhausted at that point, the Evil Spirit cannot conquer the Righteous. Carved by Homin, celebrated glyptic artist, Tokio. Signed. Height, 7 1-2 inches.
600. Karatsu Teapot. Thin white glaze over carved Mishima pattern. Unusual specimen. Height, 9 inches.
601. Two Imps Supporting Lantern. Wood Carving. Height, 10 inches.
602. Mitsuhiro Bronze. Plain, smooth bronze, deep green in color with tint of dragon's-blood red. With teakwood stand. Height, 11 inches.
603. Mitsuhiro Bronze. Melon shape. Fine quality. Height, 15 inches.
604. Porcelain Bottle. Blue and white decoration of landscape under glaze. Made at Otokoyama in the Province of Kii. Rare specimen. Mark, Nanki Otokoyama. Date, 1780. With teakwood stand. Height, 18 1-3 inches.
605. Banko Sake Bottle. Decoration in red and green enamel. Old specimen. Date, 1790. With teakwood stand. Height, 9 1-2 inches.
606. Awata Sake Jug. Known as Amamori or rain stain. Mark, Iwakurazan. Date, 1780. Height, 7 1-2 inches.
607. Sake Bottle. Thin white glaze over yellowish gray clay. Date, 1750. Height, 10 inches.
608. Old Gold Brocade. Imperial Crest of Chrysanthemum woven into it in gold. Came from Honganji Temple, Kyoto. One of the richest, rarest brocades. Date, 1800. Size, 53 x 53 inches.

609. Silk Fukusa. Covering for wedding gift. Delicate design of wedding utensils. Heavy Shiwoze Silk, lined with red crêpe. Date, 1800.
610. Old Fruit Basket.
611. Old Chinese Bronze Bowl. Rich dark brown in color, fluted sides and edge. Genuine specimen of Hsuang-Te (1426). Mark, Tai Min Hsuang-Te Nen Sei. Diameter, 5 inches.
612. Miniature Metal Shrine Lamp. Perfect little specimen. Beautiful carving on foot of lantern.
613. Old Decorated Satsuma. Decoration, Mikado's brocade tent, in dull red, green, and blue. Fine marble-like crackle. Genuine Old Satsuma. Date, 1800.
614. Old Awata Sake Kettle. Bamboo and plum decoration in blue and green enamels. Fine crackle. Date, 1780.
615. Gold Lacquer Box, inlaid with Mother of Pearl and metal. Inside finished with fine Nashiji Gold lacquer. Several Korin patterns all over the box.
616. Shrine of Buddha. Standing Buddha carved from white sandal wood. Two figures carved on door are Fuga and Monju, his immediate disciples. Height, 6 1-2 inches.
617. Old Kiyomidzu Bottle. Decoration, pine tree in glorious Venetian blue, green, and gold. Soft crackle. Fine Specimen. Date, 1700. Height, 6 1-2 inches.
618. Old Bronze Water-Pot. Unique repoussé. Date, 1780.
619. Yeiraku Bowl. Made by Yeiraku Zengoro at the private kiln of Prince Tokugawa, Kii. The stamp on this specimen is the gold seal the potter received from the Prince. Chinese landscape and poetry painted in blue under the glaze. Genuine specimen. Mark, Kwa Hin Shi Riu. Signed, Dai nippon Yeiraku.

620. Old Bronze Dish. By Toun, celebrated bronze caster, about 1800. A dragon coils about the dish which is supported by four legs. Mark, To-un Cast. Diameter, 9 inches; height, 5 inches.
621. Mitsuhiro Vase. Tall, slender vase flaring at top. Most simple and graceful form ever cast by Mitsuhiro. Green, tinted with rich red. Height, 13 inches.
622. Seto Bottle. Beautiful, rich black glaze with Imperial Chrysanthemum Crest. Made by Shuntai, at Seto, Owari. Date, 1800. Height, 6 1-2 inches.
623. Old Awata Tea Bowl. Delicate painting of weeping willow and fish, probably done by Master of Shijio School. Date, 1830.
624. Large Old Tea Jar. Rich, glowing color melting away into greenish blue. It is the largest and finest Shigaraki Jar in the collection. This was in the possession of a famous wholesale Tea Merchant in Kyoto, for many generations. Made at Shigaraki, about 1700. Height, 30 inches.
625. Awata Tea Jar. Floral Decoration in delicate blue under the glaze. Made by Kinkozan. Date, 1780.
626. Japanese Lamp. The vase is Shigaraki ware; the shade, lacquered wood frame painted with native Japanese Lotus in Blossom. Finest Duplex Burner. Height, 30 inches.
627. Old Silk Embroidery. Pine tree and storks embroidered with gold on navy blue satin.
628. Shrine of Fudo. Fudo of fine expression. The stand is carved from sandal wood. Beautiful red shrine lined with gold.
629. Old Temple Bell. A "Tokko" forms the handle. Bell is beautifully decorated with chiseled pattern of Lotus Flowers. Melodious tone.
630. Old Short Sword. Length of blade, 10 inches. Tsuba and hilt decorated with fine Shakudo Morning Glories inlaid with gold. Scabbard is decorated with gold floral design. Blade is very fine quality; used by ladies of Samurai.

631. Old Green Bronze. In shape of Morning Glory. Height, 9 1-2 inches.
632. Old Red Bronze. In form of mallet. Made by Masahara. Date, 1780. Signed. Height, 12 inches.
633. Shozan Vase. Mass of plum blossoms on rich black ground. With teakwood stand. Signed, Shozan Okumura.
634. Kioto Vase. Delicate floral decoration on soft chocolate ground. Made by Tozan Ito. With teakwood stand. Height, 9 inches.
635. Shozan Vase. Iris decoration in Kenzan blue. Fine crackle. Height, 12 inches.
636. Old Imari Plate. Decoration, Chinese figure in blue and green. Date, 1800. Diameter, 8 1-2 inches.
637. Old Nabeshima Dish. Three white rabbits in conventional waves. Fine specimen. Diameter, 8 inches.
638. Old Nabeshima Plate. Decoration, Sacred Phoenix and peony in deep blue, coral red, and gold. Date, 1780. Diameter, 9 inches.
639. Old Imari Plates. Ten pieces in set. Fine old blue decoration under glaze. Diameter, 7 1-4 inches.
640. Old Imari Plates. Seven pieces in set. Diameter, 7 1-2 inches.
641. Pair of Kioto Dishes. Decoration, figure and poetry. Made by Dohachi.
642. Old Imari Plates. Six in set. Decoration, Sacred Phoenix with spread wings and tail feathers. Beautiful blue and white. Rare dishes. Date, 1780. Diameter, 6 1-2 inches.
643. Old Gold Brocade. Conventional design in royal purple and gold. Rare piece. Size, 35 x 54 inches.
644. Old Altar Brocade. Size, 30 x 36 inches.
645. Old Silk Robe, worn by Buddhist Priest. 42 x 77 inches.

646. Old Silk Brocade Fukusa.
647. Old Jacket. 200 years old.
648. Piece of Old Embroidered Silk. 200 years old.
649. Old Embroidered Silk Fukusa.
650. Old Silk Fukusa with Imperial Crest.
651. Old Silk Obi.
652. Old Silk Mantel Covering.
653. Shozan Vase. Bamboo and poppy design with dash of black glaze. Height, 13 1-2 inches.
654. Japanese Lamp. Green Toyoraku Vase with shade, decorated with Wistaria. Typical Japanese house lamp. Height, 26 inches.
655. Vase with Lizard. Made by Zoroku, Kioto. With teakwood stand. Height, 10 inches.
656. Shozan Placque. Diameter, 10 inches.
657. Porcelain Vase. Delicate blue decoration of Fugi mountain and dragon in round panel. Background is covered with charming painting of Hydrangea blossoms. Height, 12 1-2 inches.
658. Idzumo Vase. In form of a roll of scripture. Height, 10 inches.
659. Shozan Placque. Grape-vine decoration in Kenzan blue. Diameter, 13 1-2 inches.
660. Shozan Jar. This is the result of Shozan's careful study of Sotatsu's poppies. Diameter, 9 inches; depth, 9 inches.
661. Chinese Mirror-Black Jar. Kang-hsi Period (1662). This magnificent jar is perfect in every respect. Uniform mirror-black glaze completely covers the outside. It looks as if it were coated with rich black lacquer. With teakwood stand. (See illustration.) Diameter, 13 3-4 inches; height, 15 inches.





NO. 661.





662. Large Kioto Bottle. Made by Kiudotei. Charming chrysanthemums painted under the glaze. One of the most attractive pieces of Kioto faience. Date, 1839. Inscription, Tenth year Tempo (91,839), made by Kindotei. Height, 20 inches.
663. Old Bronze Jar. Simple in form, supported on three lions' heads which form feet to the jar. An elephant's head forms handle on either side. Made by Nagoshi, celebrated Court bronze maker about 1820. Height, 8 1-4 inches.
664. Inro. Cherry-wood bark, inlaid Mother of Pearl, and metal. Figure of a peasant caught in a shower, running, with vegetable leaves on his head. Genuine specimen of Ogata Korin. Signed, Korin. Ivory Netsuke and Ojime. Date, 1730.
665. Inro. Frolicking lions inlaid in gold and silver. Inside finished in gold Nashiji lacquer. Very old specimen made in Ashikaga Era. Ivory Netsuke. Date about 1470.
666. Kenzan Box. Decoration, dull red, blue, green, and yellow bands passing about box. Inside is rich dark green with fine iridescence. Genuine specimen of Agata Kenzan. Signed, Kenzan.
667. Wood Carving. Collection of native Japanese persimmon, chestnuts, and Kuwai (Scientific name, *Sagittaria Sagittata*). This carving is perfect in every detail.
668. Tamba Sake Bottle. Splash of yellowish mottled glaze on brown ground. Figure of Hotei carved in relief under the glaze. Glorious iridescence. Made at Tachikui, in Province of Tamba. Date about 1665. Height, 8 1-2 inches. One of the most important specimens in this collection.
669. Tamba Sake Bottle. Upper part is covered with a pale blue glaze; the rest is black. Date, 1750. Height, 7 inches.

670. Old Yekaratsu Bowl. One of the finest old specimens. Faint classic painting under glaze. Fine crackle. Date, 1600. With teakwood stand.
671. Old Bizen Water Pot. In form of rock with fisherman seated on top. Made by Tazayemon, Bizen, about 1730. Furnace mark of Tazayemon.
672. Old Bizen Tea Bowl. Splash of amber yellow glaze over dark brown ground. Made by Terami Jirobei. Date about 1700. Mark, Terami in fan-shaped ring.
673. Old Blue Bizen Bottle. In form of gourd. Lower part has corrugated surface and furnace mark of the kiln of thirteenth century. Rare specimen.
674. Old Bizen Bottle, long, slender neck. Made about 1680. Has furnace mark "Cho." Height, 7 1-2 inches.
675. Embroidered Silk Hanging. Sacred Eagle and Kirin. Entire ground is covered with embroidered peony and leaves. Bordered with Donsu Brocade. Size, 84 x 68 inches.
676. Embroidered Silk Hanging. Upper portion is embroidered Wistaria blossom, cockerels, hens, and brood of chickens, on green lawn below, solid back ground of needle work in gray. Bordered with slim gold brocade. Lining is red Momi silk. 97 x 87 inches.
677. Embroidered Silk Hanging. Group of white herons in iris flower pond. Deep green pine tree on left, and distant prictmeria make striking contrast to delicate yellowish tint of the ground. Conventional water lines in pearl gray and iris flowers, embossed in silk thread. Gold brocade border. 82 x 55 inches.
678. Embroidered Silk Hanging. Fugi mountain in distance clad in snow, flock of stork flying across, gazed at by eagle below, resting on rock. Waves on solid needlework in light blue and white silk thread brocade border and repoussé brass mountings.









SMITHSONIAN INSTITUTION LIBRARIES



3 9088 01768 2196